



**INTERNATIONAL  
GEMOLOGICAL  
INSTITUTE**

**LABORATORY GROWN DIAMOND REPORT**

December 17, 2024  
 IGI Report Number **LG669452365**  
 Description **LABORATORY GROWN DIAMOND**  
 Shape and Cutting Style **ROUND BRILLIANT**  
 Measurements **6.01 - 6.05 X 3.90 MM**

**GRADING RESULTS**

Carat Weight **0.90 CARAT**  
 Color Grade **D**  
 Clarity Grade **VS 2**  
 Cut Grade **VERY GOOD**

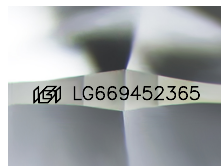
**ADDITIONAL GRADING INFORMATION**

Polish **EXCELLENT**  
 Symmetry **EXCELLENT**  
 Fluorescence **NONE**  
 Inscription(s) **IGI LG669452365**

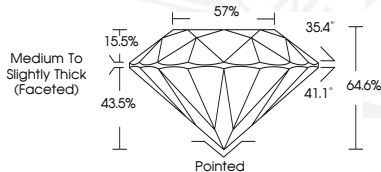
Comments: As Grown - No indication of post-growth treatment. This Laboratory Grown Diamond was created by High Pressure High Temperature (HPHT) growth process. Type II

**ELECTRONIC COPY**

**LG669452365**



Sample Image Used



December 17, 2024  
 IGI Report Number **LG669452365**  
 ROUND BRILLIANT  
 LABORATORY GROWN DIAMOND  
 6.01 - 6.05 X 3.90 MM  
 Carat Weight **0.90 CARAT**  
 Color Grade **D**  
 Clarity Grade **VS 2**  
 Cut Grade **VERY GOOD**  
 Polish **EXCELLENT**  
 Symmetry **EXCELLENT**  
 Fluorescence **NONE**  
 Inscription(s) **IGI LG669452365**  
 Comments: As Grown - No indication of post-growth treatment. This Laboratory Grown Diamond was created by High Pressure High Temperature (HPHT) growth process. Type II



December 17, 2024  
 IGI Report Number **LG669452365**  
 ROUND BRILLIANT  
 LABORATORY GROWN DIAMOND  
 6.01 - 6.05 X 3.90 MM  
 Carat Weight **0.90 CARAT**  
 Color Grade **D**  
 Clarity Grade **VS 2**  
 Cut Grade **VERY GOOD**  
 Polish **EXCELLENT**  
 Symmetry **EXCELLENT**  
 Fluorescence **NONE**  
 Inscription(s) **IGI LG669452365**  
 Comments: As Grown - No indication of post-growth treatment. This Laboratory Grown Diamond was created by High Pressure High Temperature (HPHT) growth process. Type II

THIS DOCUMENT WAS PRODUCED WITH THE FOLLOWING SECURITY MEASURES: SPECIAL DOCUMENT PAPER, INK SCREENS, WATERMARK, BACKGROUND DESIGN, HOLOGRAM AND OTHER SECURITY FEATURES NOT LISTED AND DO EXCEED DOCUMENT SECURITY INDUSTRY GUIDELINES.

For terms & conditions and to verify this report, please visit [www.igi.org](http://www.igi.org)