



**ELECTRONIC COPY**

LG669466749  
Report verification at igi.org



December 14, 2024

IGI Report Number **LG669466749**

Description **LABORATORY GROWN DIAMOND**

Shape and Cutting Style **ROUND BRILLIANT**

Measurements **7.33 - 7.38 X 4.59 MM**

**GRADING RESULTS**

Carat Weight **1.51 CARAT**

Color Grade **D**

Clarity Grade **VS 2**

Cut Grade **IDEAL**

December 14, 2024  
IGI Report Number **LG669466749**  
Description **LABORATORY GROWN DIAMOND**  
Shape and Cutting Style **ROUND BRILLIANT**  
Measurements **7.33 - 7.38 X 4.59 MM**

**GRADING RESULTS**

Carat Weight **1.51 CARAT**

Color Grade **D**

Clarity Grade **VS 2**

Cut Grade **IDEAL**

**ADDITIONAL GRADING INFORMATION**

Polish **EXCELLENT**

Symmetry **EXCELLENT**

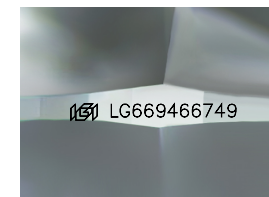
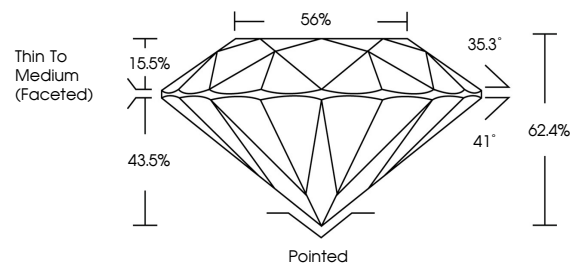
Fluorescence **NONE**

Inscription(s) **LG669466749**

Comments: As Grown - No indication of post-growth treatment.

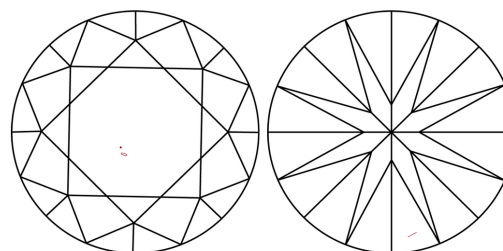
This Laboratory Grown Diamond was created by High Pressure High Temperature (HPHT) growth process. Type II

**PROPORTIONS**



Sample Image Used

**CLARITY CHARACTERISTICS**



**KEY TO SYMBOLS**

Red symbols indicate internal characteristics.  
Green symbols indicate external characteristics.

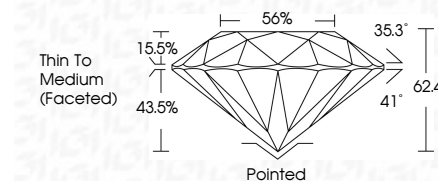
**COLOR**

D E F G H I J Faint Very Light Light

**CLARITY**

IF VS<sup>1-2</sup> VS<sup>1-2</sup> SI<sup>1-2</sup> I<sup>1-3</sup>

Internally Flawless Very Very Slightly Included Very Slightly Included Slightly Included Included



**ADDITIONAL GRADING INFORMATION**

Polish **EXCELLENT**

Symmetry **EXCELLENT**

Fluorescence **NONE**

Inscription(s) **LG669466749**

Comments: As Grown - No indication of post-growth treatment.

This Laboratory Grown Diamond was created by High Pressure High Temperature (HPHT) growth process. Type II



**IGI**



|                           |                       |             |               |           |       |       |                          |         |           |           |              |                |
|---------------------------|-----------------------|-------------|---------------|-----------|-------|-------|--------------------------|---------|-----------|-----------|--------------|----------------|
| December 14, 2024         | 1.51 CARAT            | D           | VS 2          | IDEAL     | 62.4% | 56%   | Thin To Medium (Faceted) | Pointed | EXCELLENT | EXCELLENT | NONE         | LG669466749    |
| IGI Report No LG669466749 | Carat Weight          | Color Grade | Clarity Grade | Cut Grade | Depth | Table | Girdle                   | Culet   | Polish    | Symmetry  | Fluorescence | Inscription(s) |
| ROUND BRILLIANT           | 7.33 - 7.38 X 4.59 MM | D           | VS 2          | IDEAL     | 62.4% | 56%   | Thin To Medium (Faceted) | Pointed | EXCELLENT | EXCELLENT | NONE         | LG669466749    |

Comments: As Grown - No indication of post-growth treatment. This Laboratory Grown Diamond was created by High Pressure High Temperature (HPHT) growth process. Type II