



ELECTRONIC COPY

LABORATORY GROWN DIAMOND REPORT

December 26, 2024
IGI Report Number LG669471569
Description LABORATORY GROWN DIAMOND
Shape and Cutting Style PRINCESS CUT
Measurements 7.35 X 7.28 X 5.30 MM

GRADING RESULTS

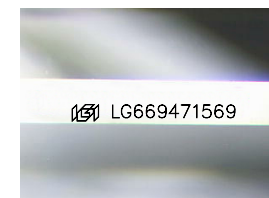
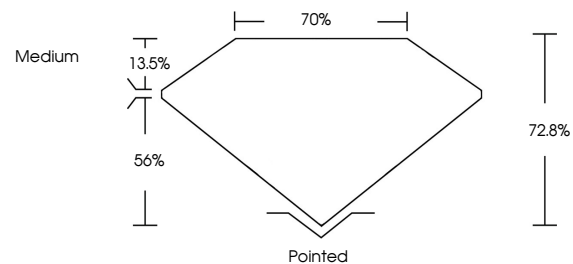
Carat Weight 2.53 CARATS
Color Grade E
Clarity Grade VS 1

ADDITIONAL GRADING INFORMATION

Polish EXCELLENT
Symmetry EXCELLENT
Fluorescence NONE
Inscription(s) IGI LG669471569

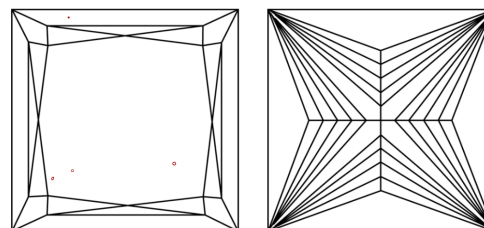
Comments: This Laboratory Grown Diamond was created by Chemical Vapor Deposition (CVD) growth process. Type IIa

PROPORTIONS



Sample Image Used

CLARITY CHARACTERISTICS



KEY TO SYMBOLS

Red symbols indicate internal characteristics. Green symbols indicate external characteristics.

COLOR

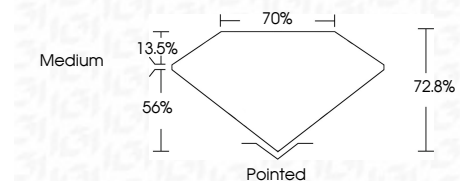
D E F G H I J Faint Very Light Light

CLARITY

IF WS 1-2 VS 1-2 SI 1-2 I 1-3
Internally Flawless Very Very Slightly Included Very Slightly Included Slightly Included Included



December 26, 2024
IGI Report Number LG669471569
Description LABORATORY GROWN DIAMOND
Shape and Cutting Style PRINCESS CUT
Measurements 7.35 X 7.28 X 5.30 MM
GRADING RESULTS
Carat Weight 2.53 CARATS
Color Grade E
Clarity Grade VS 1



ADDITIONAL GRADING INFORMATION

Polish EXCELLENT
Symmetry EXCELLENT
Fluorescence NONE
Inscription(s) IGI LG669471569
Comments: This Laboratory Grown Diamond was created by Chemical Vapor Deposition (CVD) growth process. Type IIa



December 26, 2024
IGI Report No. LG669471569
PRINCESS CUT
7.35 X 7.28 X 5.30 MM
2.53 CARATS
E
VS 1
72.8%
70%
Medium
Pointed
EXCELLENT
EXCELLENT
NONE
IGI LG669471569
Comments: This Laboratory Grown Diamond was created by Chemical Vapor Deposition (CVD) growth process. Type IIa