



ELECTRONIC COPY

LG669476570
Report verification at igi.org



December 18, 2024

IGI Report Number **LG669476570**

Description **LABORATORY GROWN DIAMOND**

Shape and Cutting Style **SQUARE EMERALD CUT**

Measurements **6.97 X 6.91 X 4.64 MM**

GRADING RESULTS

Carat Weight **2.15 CARATS**

Color Grade **D**

Clarity Grade **VVS 1**

December 18, 2024
IGI Report Number **LG669476570**
Description **LABORATORY GROWN DIAMOND**
Shape and Cutting Style **SQUARE EMERALD CUT**
Measurements **6.97 X 6.91 X 4.64 MM**

GRADING RESULTS

Carat Weight **2.15 CARATS**

Color Grade **D**

Clarity Grade **VVS 1**

ADDITIONAL GRADING INFORMATION

Polish **EXCELLENT**

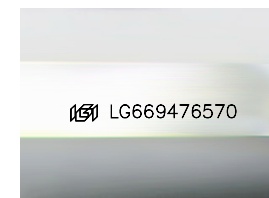
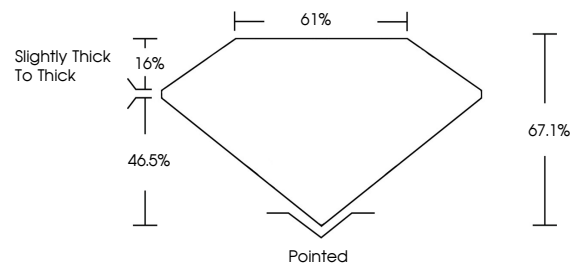
Symmetry **EXCELLENT**

Fluorescence **NONE**

Inscription(s) **IGI LG669476570**

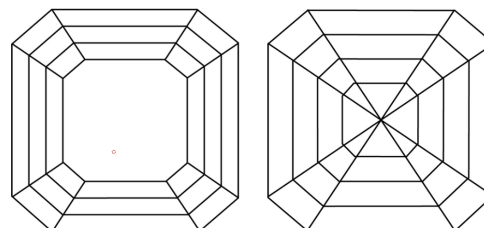
Comments: This Laboratory Grown Diamond was created by Chemical Vapor Deposition (CVD) growth process.
Type IIa

PROPORTIONS



Sample Image Used

CLARITY CHARACTERISTICS



KEY TO SYMBOLS

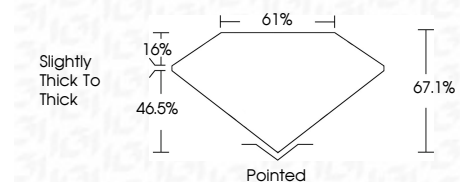
Red symbols indicate internal characteristics.
Green symbols indicate external characteristics.

COLOR

D E F G H I J Faint Very Light Light

CLARITY

IF	VS ¹⁻²	VS ¹⁻²	SI ¹⁻²	I ¹⁻³
Internally Flawless	Very Very Slightly Included	Very Slightly Included	Slightly Included	Included



ADDITIONAL GRADING INFORMATION

Polish **EXCELLENT**

Symmetry **EXCELLENT**

Fluorescence **NONE**

Inscription(s) **IGI LG669476570**

Comments: This Laboratory Grown Diamond was created by Chemical Vapor Deposition (CVD) growth process.
Type IIa



IGI



December 18, 2024
IGI Report No LG669476570
SQUARE EMERALD CUT
6.97 X 6.91 X 4.64 MM
2.15 CARATS
D
VVS 1
67.1%
61%
Slightly Thick To Thick
Pointed
EXCELLENT
EXCELLENT
NONE
IGI LG669476570

Comments: This Laboratory Grown Diamond was created by Chemical Vapor Deposition (CVD) growth process.
Type IIa