



**INTERNATIONAL
GEMOLOGICAL
INSTITUTE**

ELECTRONIC COPY

LG669481570

LABORATORY GROWN DIAMOND REPORT

December 18, 2024
 IGI Report Number **LG669481570**
 Description **LABORATORY GROWN DIAMOND**
 Shape and Cutting Style **ROUND BRILLIANT**
 Measurements **4.61 - 4.63 X 2.81 MM**

GRADING RESULTS

Carat Weight **0.37 CARAT**
 Color Grade **E**
 Clarity Grade **VS 1**
 Cut Grade **IDEAL**

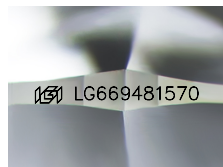
ADDITIONAL GRADING INFORMATION

Polish **EXCELLENT**
 Symmetry **EXCELLENT**
 Fluorescence **NONE**
 Inscription(s) **IGI LG669481570**

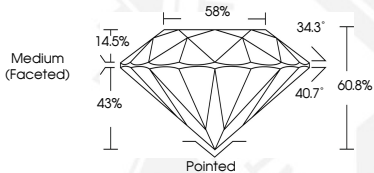
Comments: HEARTS & ARROWS
 This Laboratory Grown Diamond was created by Chemical Vapor
 Deposition (CVD) growth process.
 Type Iia



HEARTS & ARROWS



Sample Image Used



December 18, 2024
 IGI Report Number **LG669481570**
 ROUND BRILLIANT
 LABORATORY GROWN DIAMOND
 4.61 - 4.63 X 2.81 MM
 Carat Weight **0.37 CARAT**
 Color Grade **E**
 Clarity Grade **VS 1**
 Cut Grade **IDEAL**
 Polish **EXCELLENT**
 Symmetry **EXCELLENT**
 Fluorescence **NONE**
 Inscription(s) **IGI LG669481570**
 Comments: HEARTS & ARROWS This
 Laboratory Grown Diamond was
 created by Chemical Vapor
 Deposition (CVD) growth process.
 Type Iia



December 18, 2024
 IGI Report Number **LG669481570**
 ROUND BRILLIANT
 LABORATORY GROWN DIAMOND
 4.61 - 4.63 X 2.81 MM
 Carat Weight **0.37 CARAT**
 Color Grade **E**
 Clarity Grade **VS 1**
 Cut Grade **IDEAL**
 Polish **EXCELLENT**
 Symmetry **EXCELLENT**
 Fluorescence **NONE**
 Inscription(s) **IGI LG669481570**
 Comments: HEARTS & ARROWS This
 Laboratory Grown Diamond was
 created by Chemical Vapor
 Deposition (CVD) growth process.
 Type Iia

THIS DOCUMENT WAS PRODUCED WITH THE FOLLOWING SECURITY MEASURES: SPECIAL DOCUMENT PAPER, PINK SCREENS, WATERMARK, BACKGROUND DESIGNS, HOLOGRAM AND OTHER SECURITY FEATURES NOT LISTED AND DO EXCEED DOCUMENT SECURITY INDUSTRY GUIDELINES.

For terms & conditions and to verify this report, please visit www.igi.org