

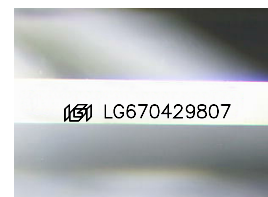
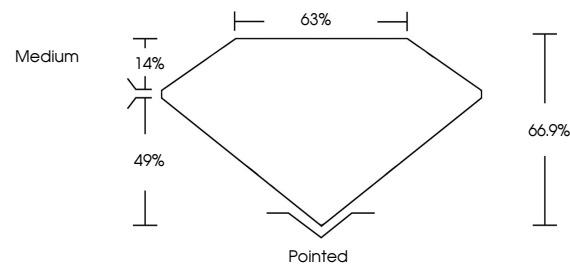


ELECTRONIC COPY

LABORATORY GROWN DIAMOND REPORT

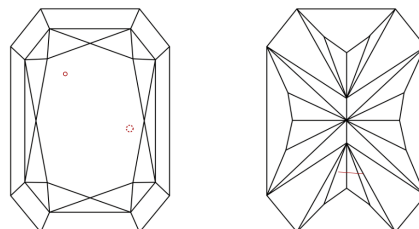
LG670429807
Report verification at igi.org

PROPORTIONS



Sample Image Used

CLARITY CHARACTERISTICS



KEY TO SYMBOLS

Red symbols indicate internal characteristics.
Green symbols indicate external characteristics.

COLOR

D E F G H I J Faint Very Light Light

CLARITY

IF VWS¹⁻² VS¹⁻² SI¹⁻² I¹⁻³

Internally Flawless	Very Very Slightly Included	Very Slightly Included	Slightly Included	Included
------------------------	--------------------------------	---------------------------	----------------------	----------

LABORATORY GROWN DIAMOND REPORT



December 23, 2024

IGI Report Number **LG670429807**Description **LABORATORY GROWN DIAMOND**

Shape and Cutting Style

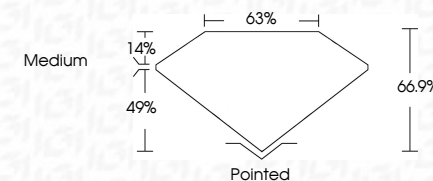
Measurements 7.57 X 5.59 X 3.74 MM

GRADING RESULTS

Carat Weight 1.34 CARAT

Color Grade D

Clarity Grade SI 1



ADDITIONAL GRADING INFORMATION

Polish EXCELLENT

Symmetry **EXCELLENT**Fluorescence NONEInscription(s) LG670429807

Comments: This Laboratory Grown Diamond was created by Chemical Vapor Deposition (CVD) growth process.
Type IIa



IG



© IGI 2020, International Gemological Institute

FD - 10 20

www.igi.org

December 23, 2024	
SUP Report No LG57069807	
CUT CORNERED RECT. MODIFIED BRILLIANT	
Wt 1.34 CARAT	
D	
SI 1	
64.9%	
63%	
Medium	
Pointed	
EXCELLENT	
EXCELLENT	
NONE	
NONE	
LG57069807	

Carat Weight

Color Grade

Clarity Grade

Depth

Table

Girdle

Pole

Culet

Polish

Symmetry

Fluorescence

Inscriptions(s)

1.34 CARAT

D

SI 1

64.9%

63%

Medium

Pointed

EXCELLENT

EXCELLENT

NONE

NONE

LG57069807

Comments:

This Laboratory Grown Diamond was analyzed by Laser Vapor Deposition (LVD) growth process.

Type IIG