

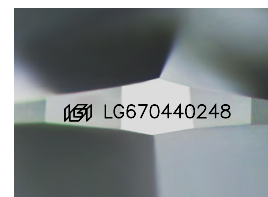
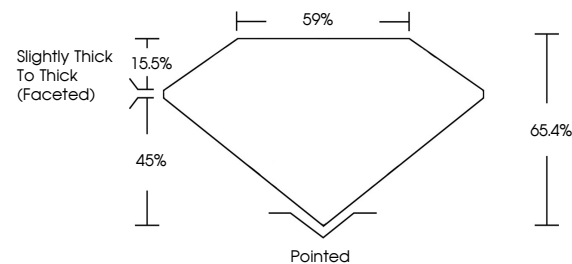


**ELECTRONIC COPY**

## LABORATORY GROWN DIAMOND REPORT

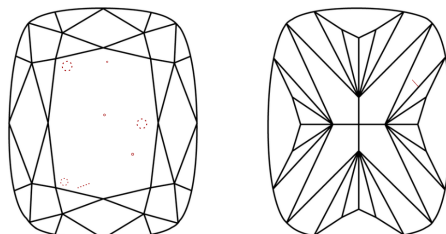
LG670440248  
Report verification at [igi.org](https://igi.org)

## PROPORTIONS



Sample Image Used

## CLARITY CHARACTERISTICS



## KEY TO SYMBOLS

Red symbols indicate internal characteristics.  
Green symbols indicate external characteristics.

## COLOR

D E F G H I J Faint Very Light Light

## CLARITY

IF      VWS<sup>1-2</sup>      VS<sup>1-2</sup>      SI<sup>1-2</sup>      I<sup>1-3</sup>

Internally Flawless	Very Very Slightly Included	Very Slightly Included	Slightly Included	Included
------------------------	--------------------------------	---------------------------	----------------------	----------

## LABORATORY GROWN DIAMOND REPORT



December 23, 2024

IGI Report Number **LG670440248**

Description **LABORATORY GROWN DIAMOND**Shape and Cutting Style **CUSHION BRILLIANT**

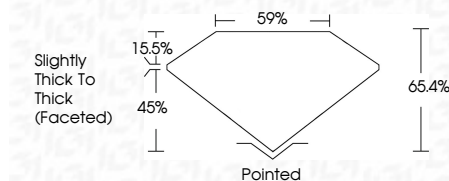
Measurements 8.28 X 6.84 X 4.47 MM

## GRADING RESULTS

Carat Weight **2.02 CARATS**

Color Grade G

Clarity Grade VS 2



### ADDITIONAL GRADING INFORMATION

Polish **EXCELLENT**Symmetry **EXCELLENT**Fluorescence **NONE**Inscription(s) 151 LG670440248

Comments: This Laboratory Grown Diamond was created by Chemical Vapor Deposition (CVD) growth process.  
Type IIa



© IGI 2020, International Gemological Institute

FD - 10 20



THIS DOCUMENT WAS PRODUCED WITH THE FOLLOWING SECURITY MEASURES: SPECIAL DOCUMENT PAPER, INK SCREENS, WATERMARK, BACKGROUND DESIGNS, HOLOGRAM AND OTHER SECURITY FEATURES NOT LISTED AND DO EXCEED DOCUMENT SECURITY INDUSTRY GUIDELINES

December 23, 2024  
IGI Report No LG670440248  
CUSHION BRILLIANT

8.23 x 6.84 x 4.47 MM	2.02 CARATS	VS 2	POINED
Color Grade		65.4%	EXCELLENT
Clarity Grade		59%	EXCELLENT
Depth		Slightly Thick to Thick (faceted)	NONE
Table			EXCELLENT
Grade			EXCELLENT
Quiet			EXCELLENT
Polish			EXCELLENT
Symmetry			EXCELLENT
Fluorescence			EXCELLENT

**Comments:**  
This Laboratory Grown Diamond was created by Chemical Vapor Deposition (CVD) growth process.

**www.igi.org**