



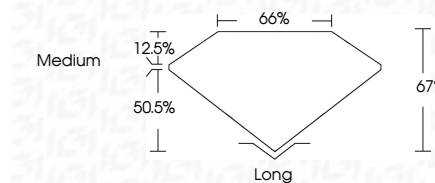
**ELECTRONIC COPY**

LG670458422  
Report verification at igi.org



December 24, 2024  
IGI Report Number **LG670458422**  
Description **LABORATORY GROWN DIAMOND**  
Shape and Cutting Style **EMERALD CUT**  
Measurements **7.64 X 5.51 X 3.69 MM**

**GRADING RESULTS**  
Carat Weight **1.50 CARAT**  
Color Grade **H**  
Clarity Grade **VS 1**

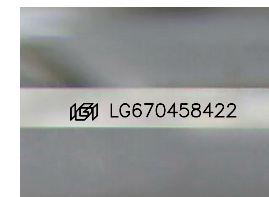


**ADDITIONAL GRADING INFORMATION**  
Polish **EXCELLENT**  
Symmetry **EXCELLENT**  
Fluorescence **NONE**  
Inscription(s) **IGI LG670458422**  
Comments: This Laboratory Grown Diamond was created by Chemical Vapor Deposition (CVD) growth process. Type IIa



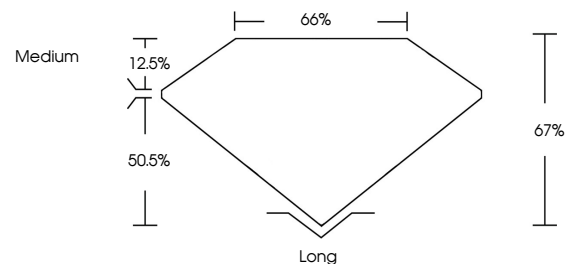
December 24, 2024  
IGI Report No. LG670458422  
**EMERALD CUT**  
1.50 CARAT H  
7.64 X 5.51 X 3.69 MM  
Color Grade VS 1  
Depth 67%  
Table 50.5%  
Girdle Medium  
Culet Long  
Polish EXCELLENT  
Symmetry EXCELLENT  
Fluorescence NONE  
Inscription(s) IGI LG670458422

Comments: This Laboratory Grown Diamond was created by Chemical Vapor Deposition (CVD) growth process. Type IIa

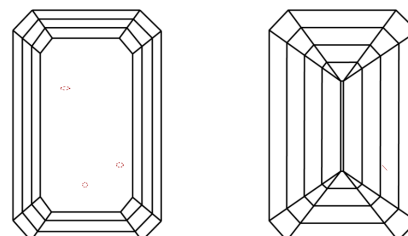


Sample Image Used

**PROPORTIONS**



**CLARITY CHARACTERISTICS**



**KEY TO SYMBOLS**

Red symbols indicate internal characteristics.  
Green symbols indicate external characteristics.

**COLOR**

D E F G H I J Faint Very Light Light

**CLARITY**

IF	VS <sup>1-2</sup>	VS <sup>1-2</sup>	SI <sup>1-2</sup>	I <sup>1-3</sup>
Internally Flawless	Very Very Slightly Included	Very Slightly Included	Slightly Included	Included

