



ELECTRONIC COPY

LG670467157
Report verification at igi.org

LABORATORY GROWN DIAMOND REPORT

December 23, 2024
IGI Report Number **LG670467157**
Description **LABORATORY GROWN DIAMOND**
Shape and Cutting Style **EMERALD CUT**
Measurements **9.56 X 6.85 X 4.72 MM**

GRADING RESULTS

Carat Weight **3.07 CARATS**
Color Grade **G**
Clarity Grade **VS 1**

ADDITIONAL GRADING INFORMATION

Polish **EXCELLENT**
Symmetry **EXCELLENT**
Fluorescence **NONE**
Inscription(s) **IGI LG670467157**

Comments: This Laboratory Grown Diamond was created by Chemical Vapor Deposition (CVD) growth process.
Type IIa

PROPORTIONS

66%
Medium 14%
51% 68.9%
Long

CLARITY CHARACTERISTICS

KEY TO SYMBOLS

Red symbols indicate internal characteristics.
Green symbols indicate external characteristics.

COLOR

D E F G H I J Faint Very Light Light

CLARITY

IF WS¹⁻² VS¹⁻² SI¹⁻² I¹⁻³

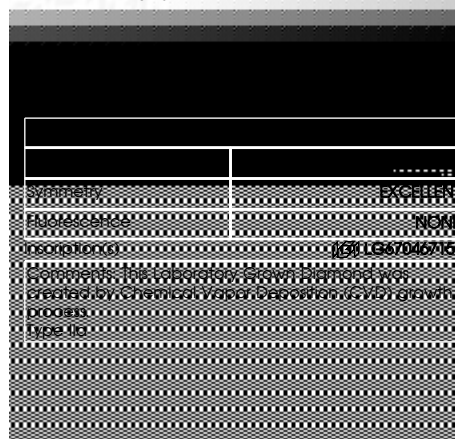
Internally Flawless Very Very Slightly Included Very Slightly Included Slightly Included Included

IGI LG670467157

Sample Image Used

December 23, 2024
IGI Report Number **LG670467157**
Description **LABORATORY GROWN DIAMOND**
Shape and Cutting Style **EMERALD CUT**
Measurements **9.56 X 6.85 X 4.72 MM**
GRADING RESULTS
Carat Weight **3.07 CARATS**
Color Grade **G**
Clarity Grade **VS 1**

66%
Medium 14%
51% 68.9%



IGI



December 23, 2024
IGI Report No **LG670467157**
EMERALD CUT
9.56 X 6.85 X 4.72 MM
Carat Weight **3.07 CARATS**
Color Grade **G**
Clarity Grade **VS 1**
Depth **68.9%**
Table **65%**
Girdle **Medium**
Culet **Long**
Polish **EXCELLENT**
Symmetry **EXCELLENT**
Fluorescence **NONE**
Inscription(s) **IGI LG670467157**
Comments: This Laboratory Grown Diamond was created by Chemical Vapor Deposition (CVD) growth process.
Type IIa