

**ELECTRONIC COPY**

## LABORATORY GROWN DIAMOND REPORT

|                         |                          |
|-------------------------|--------------------------|
| January 30, 2025        |                          |
| IGI Report Number       | LG670468429              |
| Description             | LABORATORY GROWN DIAMOND |
| Shape and Cutting Style | ROUND BRILLIANT          |
| Measurements            | 7.39 - 7.44 X 4.61 MM    |

## GRADING RESULTS

|               |                     |
|---------------|---------------------|
| Carat Weight  | 1.56 CARAT          |
| Color Grade   | E                   |
| Clarity Grade | INTERNALLY FLAWLESS |
| Cut Grade     | IDEAL               |

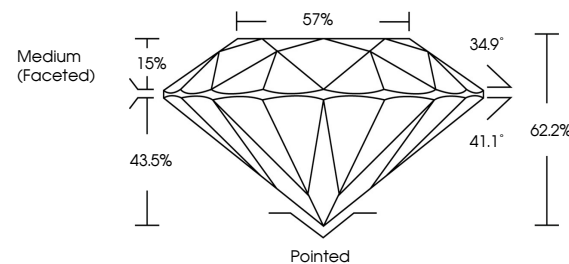
### ADDITIONAL GRADING INFORMATION

|                |   |
|----------------|---|
| Polish         | EXCELLENT   |
| Symmetry       | EXCELLENT   |
| Fluorescence   | NONE  |
| Inscription(s) |  LG670468429 |

Comments: As Grown - No indication of post-growth treatment.  
This Laboratory Grown Diamond was created by High Pressure High Temperature (HPHT) growth process.  
Type II

LG670468429  
Report verification at [igi.org](https://igi.org)

## PROPORTIONS

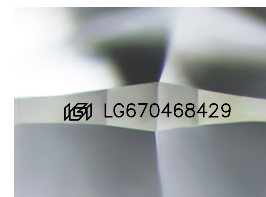


## CLARITY CHARACTERISTICS



## KEY TO SYMBOLS

Red symbols indicate internal characteristics.  
Green symbols indicate external characteristics.



Sample Image Used

**COLOR**

D E F G H I J Faint Very Light Light

## CLARITY

IF WS<sup>1-2</sup> VS<sup>1-2</sup> S<sup>1-2</sup> |<sup>1-3</sup>

|                        |                                |                           |                      |          |
|------------------------|--------------------------------|---------------------------|----------------------|----------|
| Internally<br>Flawless | Very Very<br>Slightly Included | Very<br>Slightly Included | Slightly<br>Included | Included |
|------------------------|--------------------------------|---------------------------|----------------------|----------|



© IGI 2020, International Gemological Institute

FD - 10 20

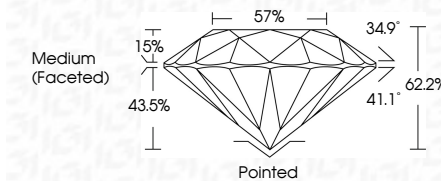
## LABORATORY GROWN DIAMOND REPORT



|                         |                          |
|-------------------------|--------------------------|
| January 30, 2025        |                          |
| IGI Report Number       | LG670468429              |
| Description             | LABORATORY GROWN DIAMOND |
| Shape and Cutting Style | ROUND BRILLIANT          |
| Measurements            | 7.39 - 7.44 X 4.61 MM    |

## GRADING RESULTS

|               |                     |
|---------------|---------------------|
| Carat Weight  | 1.56 CARAT          |
| Color Grade   | E                   |
| Clarity Grade | INTERNALLY FLAWLESS |
| Cut Grade     | IDEAL               |



### ADDITIONAL GRADING INFORMATION

|  |                           |
|--|---------------------------|
| Polish   | EXCELLENT                 |
| Symmetry   | EXCELLENT                 |
| Fluorescence   | NONE                      |
| Inscription(s)   | <del>LG</del> LG670468429 |
| Comments: As Grown - No indication of post-growth treatment.                                       |                           |
| This Laboratory Grown Diamond was created by High Pressure High Temperature (HPHT) growth process. |                           |
| Type II  |                           |



January 30, 2025  
IGI Report No LG670468429  
ROUND BRILLIANT

|                 |                    |            |             |               |           |       |       |                |          |           |           |              |                  |
|-----------------|--------------------|------------|-------------|---------------|-----------|-------|-------|----------------|----------|-----------|-----------|--------------|------------------|
| ROUND BRILLIANT | 1.39 - 7.44 X 4.61 | 1.56 CARAT | E           | IF            | IDEAL     | 62.2% | 57%   | Medium Faceted | Polished | Excellent | Excellent | None         | cert. 1570464920 |
|                 | Carat Weight       |            | Color Grade | Clarity Grade | Cut Grade | Depth | Table | Girdle         | Quilt    | Polish    | Symmetry  | Fluorescence | certification    |

**Comments:**  
As Grown - No indication of post-growth treatment.  
This Laboratory Grown Diamond was created by High Pressure High Temperature (HPHT) growth process.