



**ELECTRONIC COPY**

LG670482005  
Report verification at igi.org



December 27, 2024  
IGI Report Number **LG670482005**  
Description **LABORATORY GROWN DIAMOND**  
Shape and Cutting Style **EMERALD CUT**  
Measurements **8.46 X 6.12 X 4.11 MM**  
**GRADING RESULTS**  
Carat Weight **2.20 CARATS**  
Color Grade **FANCY INTENSE PINK**  
Clarity Grade **VVS 2**

**LABORATORY GROWN DIAMOND REPORT**

December 27, 2024  
IGI Report Number **LG670482005**  
Description **LABORATORY GROWN DIAMOND**  
Shape and Cutting Style **EMERALD CUT**  
Measurements **8.46 X 6.12 X 4.11 MM**

**GRADING RESULTS**

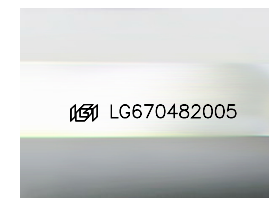
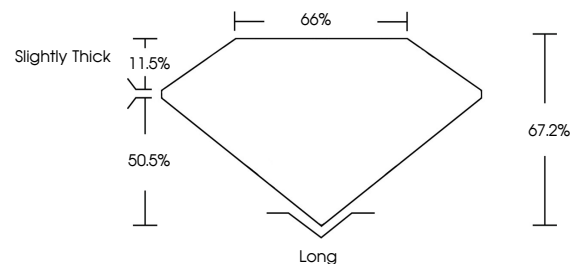
Carat Weight **2.20 CARATS**  
Color Grade **FANCY INTENSE PINK**  
Clarity Grade **VVS 2**

**ADDITIONAL GRADING INFORMATION**

Polish **EXCELLENT**  
Symmetry **EXCELLENT**  
Fluorescence **SLIGHT**  
Inscription(s) **LG670482005**

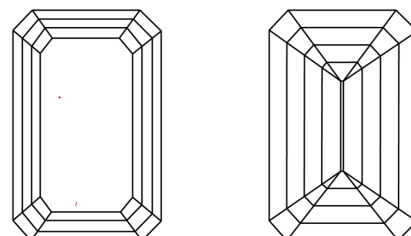
Comments: This Laboratory Grown Diamond was created by Chemical Vapor Deposition (CVD) growth process. Indications of post-growth treatment.

**PROPORTIONS**



Sample Image Used

**CLARITY CHARACTERISTICS**



**KEY TO SYMBOLS**

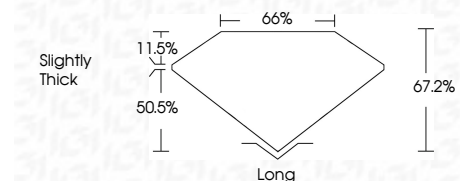
Red symbols indicate internal characteristics.  
Green symbols indicate external characteristics.

**COLOR**

D E F G H I J Faint Very Light Light

**CLARITY**

IF	VS <sup>1-2</sup>	VS <sup>1-2</sup>	SI <sup>1-2</sup>	I <sup>1-3</sup>
Internally Flawless	Very Very Slightly Included	Very Slightly Included	Slightly Included	Included



**ADDITIONAL GRADING INFORMATION**

Polish **EXCELLENT**  
Symmetry **EXCELLENT**  
Fluorescence **SLIGHT**  
Inscription(s) **LG670482005**  
Comments: This Laboratory Grown Diamond was created by Chemical Vapor Deposition (CVD) growth process. Indications of post-growth treatment.



December 27, 2024  
IGI Report No **LG670482005**  
**EMERALD CUT**  
**2.20 CARATS**  
Carat Weight **FANCY INTENSE PINK**  
Color Grade **VVS 2**  
Depth **67.2%**  
Table **66%**  
Girdle **Slightly Thick**  
Culet **Long**  
Polish **EXCELLENT**  
Symmetry **EXCELLENT**  
Fluorescence **SLIGHT**  
Inscription(s) **LG670482005**  
Comments: This Laboratory Grown Diamond was created by Chemical Vapor Deposition (CVD) growth process. Indications of post-growth treatment.

