

ELECTRONIC COPY

LG670484112
Report verification at igi.org



January 3, 2025
IGI Report Number **LG670484112**
Description **LABORATORY GROWN DIAMOND**
Shape and Cutting Style **HEART BRILLIANT**
Measurements **11.04 X 11.90 X 7.15 MM**
GRADING RESULTS
Carat Weight **5.50 CARATS**
Color Grade **F**
Clarity Grade **VS 1**

LABORATORY GROWN DIAMOND REPORT

January 3, 2025
IGI Report Number **LG670484112**
Description **LABORATORY GROWN DIAMOND**
Shape and Cutting Style **HEART BRILLIANT**
Measurements **11.04 X 11.90 X 7.15 MM**

GRADING RESULTS

Carat Weight **5.50 CARATS**
Color Grade **F**
Clarity Grade **VS 1**

ADDITIONAL GRADING INFORMATION

Polish **EXCELLENT**
Symmetry **EXCELLENT**
Fluorescence **NONE**
Inscription(s) **IGI LG670484112**

Comments: This Laboratory Grown Diamond was created by Chemical Vapor Deposition (CVD) growth process.
Type IIa

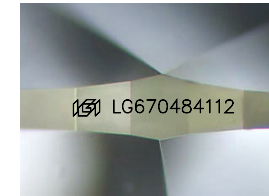
PROPORTIONS

Slightly Thick To Very Thick (Faceted) 15%
40.5%
60.1%
56%
Pointed

CLARITY CHARACTERISTICS

KEY TO SYMBOLS

Red symbols indicate internal characteristics.
Green symbols indicate external characteristics.



Sample Image Used

COLOR

D E F G H I J Faint Very Light Light

CLARITY

IF VS¹⁻² VS¹⁻² SI¹⁻² I¹⁻³
Internally Flawless Very Very Slightly Included Very Slightly Included Slightly Included Included

Slightly Thick To Very Thick (Faceted) 15%
40.5%
60.1%
56%
Pointed

ADDITIONAL GRADING INFORMATION

Polish **EXCELLENT**
Symmetry **EXCELLENT**
Fluorescence **NONE**
Inscription(s) **IGI LG670484112**
Comments: This Laboratory Grown Diamond was created by Chemical Vapor Deposition (CVD) growth process.
Type IIa



January 3, 2025
IGI Report No LG670484112
HEART BRILLIANT
11.04 X 11.90 X 7.15 MM
5.50 CARATS
F
VS 1
60.1%
65%
Slightly Thick To Very Thick (Faceted)
Pointed
EXCELLENT
EXCELLENT
NONE
IGI LG670484112

Comments: This Laboratory Grown Diamond was created by Chemical Vapor Deposition (CVD) growth process.
Type IIa