



**ELECTRONIC COPY**

LG670487449  
Report verification at igi.org



January 3, 2025  
IGI Report Number **LG670487449**  
Description **LABORATORY GROWN DIAMOND**  
Shape and Cutting Style **ROUND BRILLIANT**  
Measurements **11.79 - 11.82 X 6.93 MM**  
**GRADING RESULTS**  
Carat Weight **6.01 CARATS**  
Color Grade **H**  
Clarity Grade **VS 1**  
Cut Grade **EXCELLENT**

January 3, 2025  
IGI Report Number **LG670487449**  
Description **LABORATORY GROWN DIAMOND**  
Shape and Cutting Style **ROUND BRILLIANT**  
Measurements **11.79 - 11.82 X 6.93 MM**

**GRADING RESULTS**

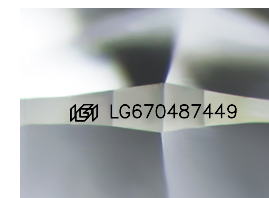
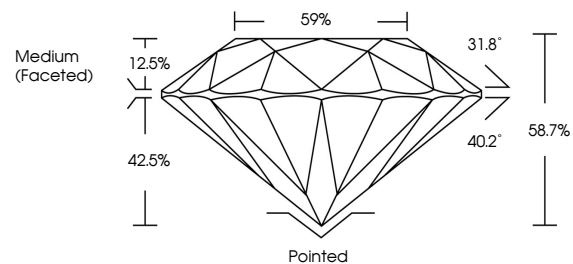
Carat Weight **6.01 CARATS**  
Color Grade **H**  
Clarity Grade **VS 1**  
Cut Grade **EXCELLENT**

**ADDITIONAL GRADING INFORMATION**

Polish **EXCELLENT**  
Symmetry **EXCELLENT**  
Fluorescence **NONE**  
Inscription(s) **LG670487449**

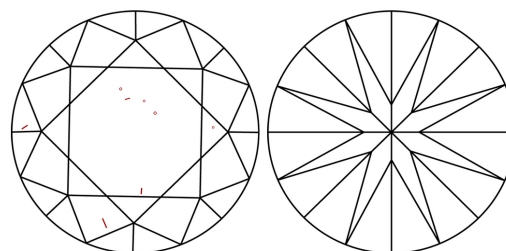
Comments: This Laboratory Grown Diamond was created by Chemical Vapor Deposition (CVD) growth process.  
Type IIa

**PROPORTIONS**



Sample Image Used

**CLARITY CHARACTERISTICS**



**KEY TO SYMBOLS**

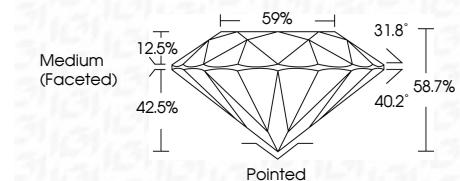
Red symbols indicate internal characteristics.  
Green symbols indicate external characteristics.

**COLOR**

D E F G H I J Faint Very Light Light

**CLARITY**

IF	VS <sup>1-2</sup>	VS <sup>1-2</sup>	SI <sup>1-2</sup>	I <sup>1-3</sup>
Internally Flawless	Very Very Slightly Included	Very Slightly Included	Slightly Included	Included



**ADDITIONAL GRADING INFORMATION**

Polish **EXCELLENT**  
Symmetry **EXCELLENT**  
Fluorescence **NONE**  
Inscription(s) **LG670487449**  
Comments: This Laboratory Grown Diamond was created by Chemical Vapor Deposition (CVD) growth process.  
Type IIa



January 3, 2025  
IGI Report No **LG670487449**  
**ROUND BRILLIANT**  
**11.79 - 11.82 X 6.93 MM**  
Carat Weight **6.01 CARATS**  
Color Grade **H**  
Clarity Grade **VS 1**  
Depth **EXCELLENT**  
Table **EXCELLENT**  
Girdle **58.7%**  
Medium (Faceted)  
Culet **Pointed**  
Polish **EXCELLENT**  
Symmetry **EXCELLENT**  
Fluorescence **NONE**  
Inscription(s) **IGI LG670487449**  
Comments: This Laboratory Grown Diamond was created by Chemical Vapor Deposition (CVD) growth process.  
Type IIa