



**ELECTRONIC COPY**

LG671439857  
Report verification at igi.org



January 9, 2025

IGI Report Number **LG671439857**

Description **LABORATORY GROWN DIAMOND**

Shape and Cutting Style **EMERALD CUT**

Measurements **8.68 X 5.95 X 4.04 MM**

**GRADING RESULTS**

Carat Weight **2.07 CARATS**

Color Grade **FANCY VIVID BLUE**

Clarity Grade **VS 1**

**LABORATORY GROWN DIAMOND REPORT**

January 9, 2025

IGI Report Number **LG671439857**

Description **LABORATORY GROWN DIAMOND**

Shape and Cutting Style **EMERALD CUT**

Measurements **8.68 X 5.95 X 4.04 MM**

**GRADING RESULTS**

Carat Weight **2.07 CARATS**

Color Grade **FANCY VIVID BLUE**

Clarity Grade **VS 1**

**ADDITIONAL GRADING INFORMATION**

Polish **EXCELLENT**

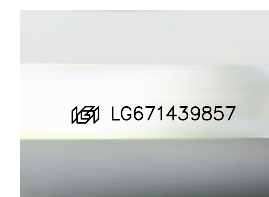
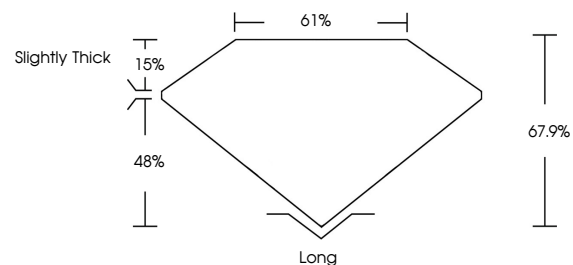
Symmetry **EXCELLENT**

Fluorescence **NONE**

Inscription(s) **IGI LG671439857**

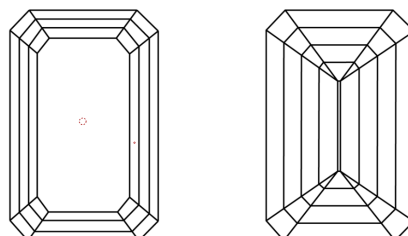
Comments: This Laboratory Grown Diamond was created by Chemical Vapor Deposition (CVD) growth process. Indications of post-growth treatment.

**PROPORTIONS**



Sample Image Used

**CLARITY CHARACTERISTICS**



**KEY TO SYMBOLS**

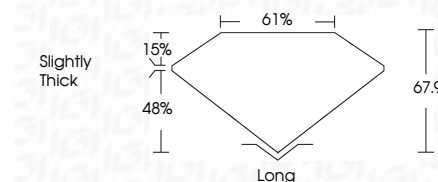
Red symbols indicate internal characteristics.  
Green symbols indicate external characteristics.

**COLOR**

D E F G H I J Faint Very Light Light

**CLARITY**

IF	VS <sup>1-2</sup>	VS <sup>1-2</sup>	SI <sup>1-2</sup>	I <sup>1-3</sup>
Internally Flawless	Very Very Slightly Included	Very Slightly Included	Slightly Included	Included



**ADDITIONAL GRADING INFORMATION**

Polish **EXCELLENT**

Symmetry **EXCELLENT**

Fluorescence **NONE**

Inscription(s) **IGI LG671439857**

Comments: This Laboratory Grown Diamond was created by Chemical Vapor Deposition (CVD) growth process. Indications of post-growth treatment.



January 9, 2025	2.07 CARATS
IGI Report No LG671439857	FANCY VIVID BLUE
EMERALD CUT	VS 1
8.68 X 5.95 X 4.04 MM	67.9%
Carat Weight	61%
Color Grade	Slightly Thick
Clarity Grade	Long
Depth	EXCELLENT
Table	EXCELLENT
Grailes	NONE
Culet	IGI LG671439857
Polish	
Symmetry	
Fluorescence	
Inscription(s)	

Comments: This Laboratory Grown Diamond was created by Chemical Vapor Deposition (CVD) growth process. Indications of post-growth treatment.