

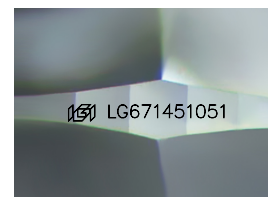
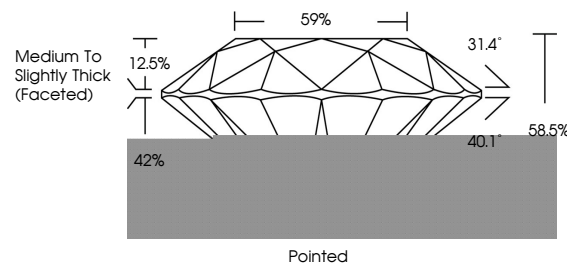


ELECTRONIC COPY

LABORATORY GROWN DIAMOND REPORT

LG671451051
Report verification at igi.org

PROPORTIONS



Sample Image Used

CLARITY CHARACTERISTICS

KEY TO SYMBOLS

Red symbols indicate internal characteristics.
Green symbols indicate external characteristics.

COLOR

D E F G H I J Faint Very Light Light

CLARITY

IF	VVS ¹⁻²	VS ¹⁻²	SI ¹⁻²	I ¹⁻³
Internally Flawless	Very Very Slightly Included	Very Slightly Included	Slightly Included	Included



© IGI 2020, International Gemological Institute

FD - 10 20



THIS DOCUMENT WAS PRODUCED WITH THE FOLLOWING SECURITY MEASURES: SPECIAL DOCUMENT PAPER, INK SCREENS, WATERMARK, BACKGROUND DESIGNS, HOLOGRAM AND OTHER SECURITY FEATURES NOT LISTED AND DO EXCEED DOCUMENT SECURITY INDUSTRY GUIDELINES

LABORATORY GROWN DIAMOND REPORT



January 4, 2025

IGI Report Number **LG671451051**

Description	LABORATORY GROWN DIAMOND
-------------	--------------------------

Shape and Cutting Style **ROUND BRILLIANT**

Measurements 13.06 - 13.10 X 7.64 MM

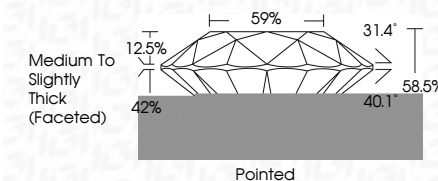
GRADING RESULTS

Carat Weight **8.01 CARATS**

Color Grade

Clarity Grade WS 2

Cut Grade **EXCELLENT**



ADDITIONAL GRADING INFORMATION

Polish **EXCELLENT**Symmetry **EXCELLENT**Fluorescence **NONE**Inscription(s)  LG671451051

Comments: This Laboratory Grown Diamond was created by Chemical Vapor Deposition (CVD) growth process.
Type IIa



January 4, 2026	GI Report No. G971461051	
ROUND BRILLIANT		
13.06 - 13.10 X 7.64 MM		
Carat Weight	8.01 CARATS	
Color Grade	F	
Clarity Grade	VS 2	
Depth	EXCELLENT	
Table	58.6%	
Girdle	59%	
	Medium to Slightly Thick (6-cared)	
Culet	Pointed	
Polish	EXCELLENT	
Symmetry	EXCELLENT	
Fluorescence	NONE	
Inscription(s)	G971461051	
Comments:		
	This Laboratory Grown Diamond was created by Chemical Vapor Deposition (CVD) growth process.	
Type IIA		