



**ELECTRONIC COPY**

LG671453993  
Report verification at igi.org



December 26, 2024

IGI Report Number **LG671453993**

Description **LABORATORY GROWN DIAMOND**

Shape and Cutting Style **EMERALD CUT**

Measurements **9.90 X 6.93 X 4.50 MM**

**GRADING RESULTS**

Carat Weight **3.11 CARATS**

Color Grade **F**

Clarity Grade **VS 1**

December 26, 2024  
IGI Report Number **LG671453993**  
Description **LABORATORY GROWN DIAMOND**  
Shape and Cutting Style **EMERALD CUT**  
Measurements **9.90 X 6.93 X 4.50 MM**

**GRADING RESULTS**

Carat Weight **3.11 CARATS**

Color Grade **F**

Clarity Grade **VS 1**

**ADDITIONAL GRADING INFORMATION**

Polish **EXCELLENT**

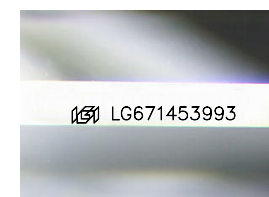
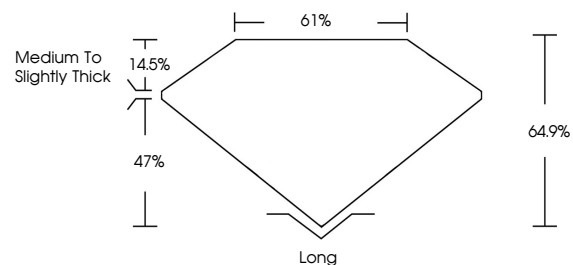
Symmetry **EXCELLENT**

Fluorescence **NONE**

Inscription(s) **IGI LG671453993**

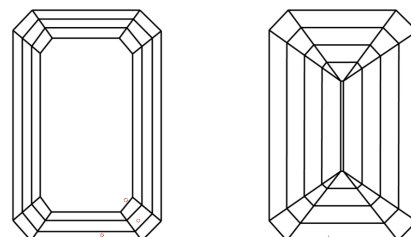
Comments: This Laboratory Grown Diamond was created by Chemical Vapor Deposition (CVD) growth process. Type IIa

**PROPORTIONS**



Sample Image Used

**CLARITY CHARACTERISTICS**



**KEY TO SYMBOLS**

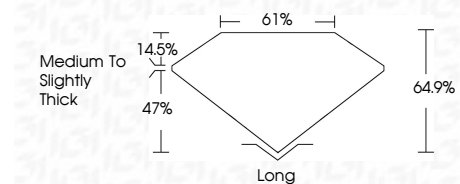
Red symbols indicate internal characteristics.  
Green symbols indicate external characteristics.

**COLOR**

D E F G H I J Faint Very Light Light

**CLARITY**

IF	VS <sup>1-2</sup>	VS <sup>1-2</sup>	SI <sup>1-2</sup>	I <sup>1-3</sup>
Internally Flawless	Very Very Slightly Included	Very Slightly Included	Slightly Included	Included



**ADDITIONAL GRADING INFORMATION**

Polish **EXCELLENT**

Symmetry **EXCELLENT**

Fluorescence **NONE**

Inscription(s) **IGI LG671453993**

Comments: This Laboratory Grown Diamond was created by Chemical Vapor Deposition (CVD) growth process. Type IIa



**IGI**

December 26, 2024  
IGI Report No LG671453993  
**EMERALD CUT**  
9.90 X 6.93 X 4.50 MM  
3.11 CARATS  
F  
VS 1  
64.9%  
47%  
61%  
Medium to Slightly Thick  
Long  
EXCELLENT  
EXCELLENT  
NONE  
IGI LG671453993

Comments: This Laboratory Grown Diamond was created by Chemical Vapor Deposition (CVD) growth process. Type IIa