



**ELECTRONIC COPY**

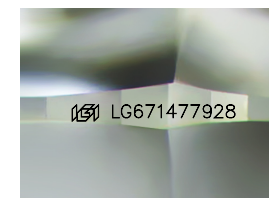
LG671477928  
Report verification at igi.org



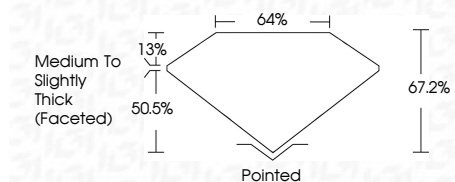
January 9, 2025  
IGI Report Number **LG671477928**  
Description **LABORATORY GROWN DIAMOND**  
Shape and Cutting Style **SQUARE CUSHION BRILLIANT**  
Measurements **7.12 X 7.10 X 4.77 MM**

**GRADING RESULTS**

Carat Weight **1.88 CARAT**  
Color Grade **E**  
Clarity Grade **VS 1**



Sample Image Used



**ADDITIONAL GRADING INFORMATION**

Polish **EXCELLENT**  
Symmetry **EXCELLENT**  
Fluorescence **NONE**  
Inscription(s) **IGI LG671477928**  
Comments: This Laboratory Grown Diamond was created by Chemical Vapor Deposition (CVD) growth process. Type IIa



January 9, 2025  
IGI Report No **LG671477928**  
**SQUARE CUSHION BRILLIANT**  
7.12 X 7.10 X 4.77 MM  
1.88 CARAT  
E  
VS 1  
67.2%  
50.5%  
13%  
64%  
Pointed  
EXCELLENT  
EXCELLENT  
NONE  
IGI LG671477928  
Comments: This Laboratory Grown Diamond was created by Chemical Vapor Deposition (CVD) growth process. Type IIa

**LABORATORY GROWN DIAMOND REPORT**

January 9, 2025  
IGI Report Number **LG671477928**  
Description **LABORATORY GROWN DIAMOND**  
Shape and Cutting Style **SQUARE CUSHION BRILLIANT**  
Measurements **7.12 X 7.10 X 4.77 MM**

**GRADING RESULTS**

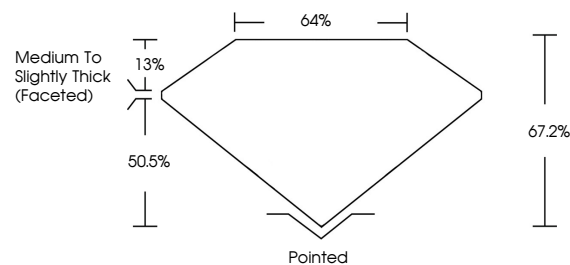
Carat Weight **1.88 CARAT**  
Color Grade **E**  
Clarity Grade **VS 1**

**ADDITIONAL GRADING INFORMATION**

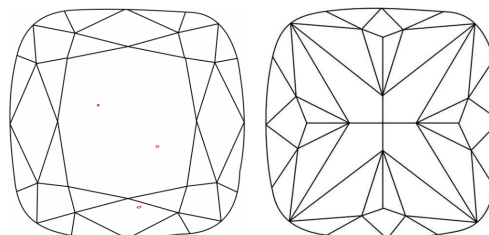
Polish **EXCELLENT**  
Symmetry **EXCELLENT**  
Fluorescence **NONE**  
Inscription(s) **IGI LG671477928**

Comments: This Laboratory Grown Diamond was created by Chemical Vapor Deposition (CVD) growth process. Type IIa

**PROPORTIONS**



**CLARITY CHARACTERISTICS**



**KEY TO SYMBOLS**

Red symbols indicate internal characteristics.  
Green symbols indicate external characteristics.

**COLOR**

D E F G H I J Faint Very Light Light

**CLARITY**

IF	VS <sup>1-2</sup>	VS <sup>1-2</sup>	SI <sup>1-2</sup>	I <sup>1-3</sup>
Internally Flawless	Very Very Slightly Included	Very Slightly Included	Slightly Included	Included

