



**ELECTRONIC COPY**

LG671484242  
Report verification at igi.org



January 17, 2025

IGI Report Number **LG671484242**

Description **LABORATORY GROWN DIAMOND**

Shape and Cutting Style **ROUND BRILLIANT**

Measurements **11.51 - 11.55 X 7.29 MM**

**GRADING RESULTS**

Carat Weight **6.01 CARATS**

Color Grade **D**

Clarity Grade **VS 1**

Cut Grade **EXCELLENT**

January 17, 2025  
IGI Report Number **LG671484242**  
Description **LABORATORY GROWN DIAMOND**  
Shape and Cutting Style **ROUND BRILLIANT**  
Measurements **11.51 - 11.55 X 7.29 MM**

**GRADING RESULTS**

Carat Weight **6.01 CARATS**

Color Grade **D**

Clarity Grade **VS 1**

Cut Grade **EXCELLENT**

**ADDITIONAL GRADING INFORMATION**

Polish **EXCELLENT**

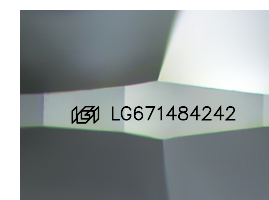
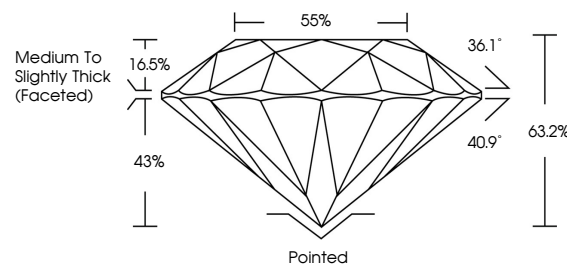
Symmetry **EXCELLENT**

Fluorescence **NONE**

Inscription(s) **IGI LG671484242**

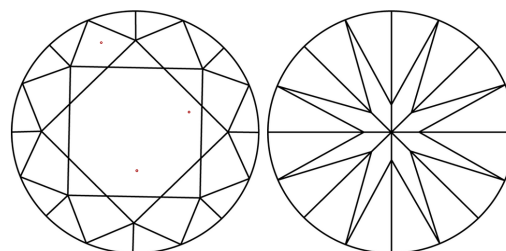
Comments: This Laboratory Grown Diamond was created by Chemical Vapor Deposition (CVD) growth process.  
Type IIa

**PROPORTIONS**



Sample Image Used

**CLARITY CHARACTERISTICS**



**KEY TO SYMBOLS**

Red symbols indicate internal characteristics.  
Green symbols indicate external characteristics.

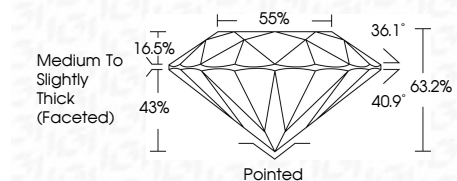
**COLOR**

D E F G H I J Faint Very Light Light

**CLARITY**

IF WS<sup>1-2</sup> VS<sup>1-2</sup> SI<sup>1-2</sup> I<sup>1-3</sup>

Internally Flawless Very Very Slightly Included Very Slightly Included Slightly Included Included



**ADDITIONAL GRADING INFORMATION**

Polish **EXCELLENT**

Symmetry **EXCELLENT**

Fluorescence **NONE**

Inscription(s) **IGI LG671484242**

Comments: This Laboratory Grown Diamond was created by Chemical Vapor Deposition (CVD) growth process.  
Type IIa



**IGI**



January 17, 2025	IGI Report No LG671484242	ROUND BRILLIANT	11.51 - 11.55 X 7.29 MM	6.01 CARATS	D	VS 1	EXCELLENT	EXCELLENT	NONE	IGI LG671484242		
Carat Weight	Color Grade	Clarity Grade	Cut Grade	Depth	Table	Girdle	Medium To Slightly Thick (Faceted)	Pointed	Polish	Symmetry	Fluorescence	Inscription(s)
				63.2%	55%			EXCELLENT	EXCELLENT	EXCELLENT	NONE	IGI LG671484242

Comments: This Laboratory Grown Diamond was created by Chemical Vapor Deposition (CVD) growth process.  
Type IIa