



ELECTRONIC COPY

LG671487184
Report verification at igi.org



February 4, 2025

IGI Report Number LG671487184

Description LABORATORY GROWN DIAMOND

Shape and Cutting Style ROUND BRILLIANT

Measurements 9.52 - 9.57 X 5.89 MM

GRADING RESULTS

Carat Weight 3.31 CARATS

Color Grade E

Clarity Grade VVS 1

Cut Grade IDEAL

February 4, 2025

IGI Report Number LG671487184

Description LABORATORY GROWN DIAMOND

Shape and Cutting Style ROUND BRILLIANT

Measurements 9.52 - 9.57 X 5.89 MM

GRADING RESULTS

Carat Weight 3.31 CARATS

Color Grade E

Clarity Grade VVS 1

Cut Grade IDEAL

ADDITIONAL GRADING INFORMATION

Polish EXCELLENT

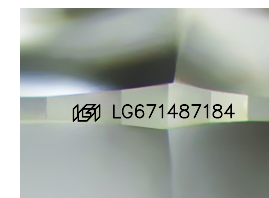
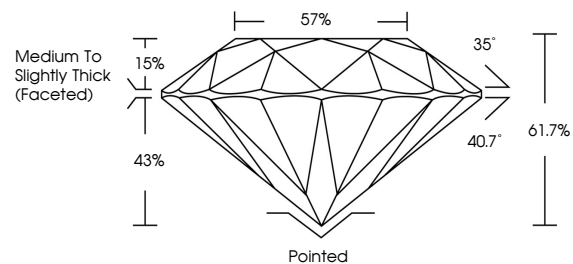
Symmetry EXCELLENT

Fluorescence NONE

Inscription(s) LG671487184

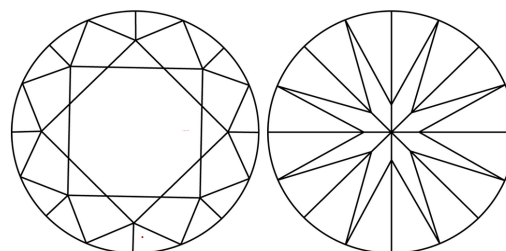
Comments: HEARTS & ARROWS
This Laboratory Grown Diamond was created by Chemical Vapor Deposition (CVD) growth process. Type IIa

PROPORTIONS



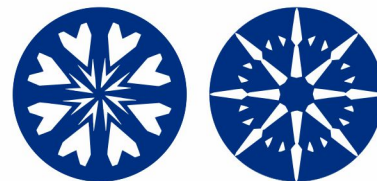
Sample Image Used

CLARITY CHARACTERISTICS



KEY TO SYMBOLS

Red symbols indicate internal characteristics.
Green symbols indicate external characteristics.

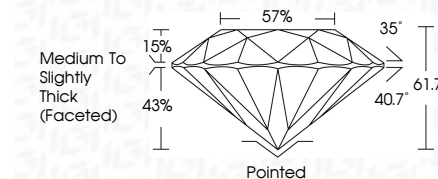


COLOR

D E F G H I J Faint Very Light Light

CLARITY

IF WS 1-2 VS 1-2 SI 1-2 I 1-3
Internally Flawless Very Very Slightly Included Very Slightly Included Slightly Included Included



ADDITIONAL GRADING INFORMATION

Polish EXCELLENT

Symmetry EXCELLENT

Fluorescence NONE

Inscription(s) LG671487184

Comments: HEARTS & ARROWS
This Laboratory Grown Diamond was created by Chemical Vapor Deposition (CVD) growth process. Type IIa



Summary table of report details: February 4, 2025, IGI Report No LG671487184, ROUND BRILLIANT, 9.52 - 9.57 X 5.89 MM, 3.31 CARATS, E, VVS 1, IDEAL, 61.7%, 57%, Medium To Slightly Thick (Faceted), Pointed, EXCELLENT, EXCELLENT, NONE, LG671487184.