



**ELECTRONIC COPY**

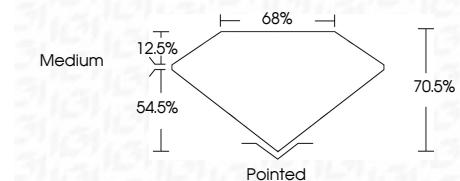
LG673411213  
Report verification at igi.org



January 17, 2025  
IGI Report Number **LG673411213**  
Description **LABORATORY GROWN DIAMOND**  
Shape and Cutting Style **PRINCESS CUT**  
Measurements **6.08 X 6.04 X 4.26 MM**

**GRADING RESULTS**

Carat Weight **1.33 CARAT**  
Color Grade **F**  
Clarity Grade **VVS 1**



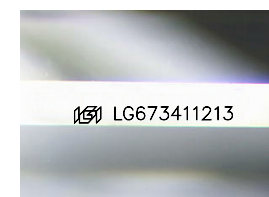
**ADDITIONAL GRADING INFORMATION**

Polish **EXCELLENT**  
Symmetry **EXCELLENT**  
Fluorescence **NONE**  
Inscription(s) **IGI LG673411213**  
Comments: This Laboratory Grown Diamond was created by Chemical Vapor Deposition (CVD) growth process. Type IIa



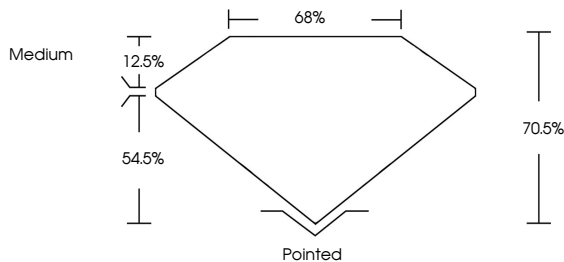
January 17, 2025  
IGI Report No. LG673411213  
**PRINCESS CUT**  
6.08 X 6.04 X 4.26 MM  
1.33 CARAT **F**  
Carat Weight **VVS 1**  
Color Grade **70.6%**  
Clarity Grade **65%**  
Table **Medium**  
Depth **Pointed**  
Girdle **EXCELLENT**  
Culet **EXCELLENT**  
Polish **EXCELLENT**  
Symmetry **NONE**  
Fluorescence **NONE**  
Inscription(s) **IGI LG673411213**

Comments: This Laboratory Grown Diamond was created by Chemical Vapor Deposition (CVD) growth process. Type IIa

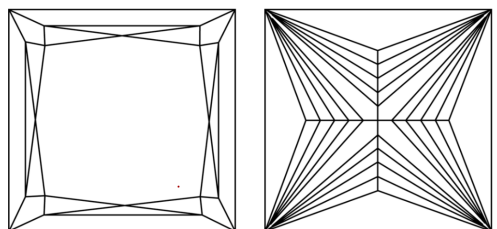


Sample Image Used

**PROPORTIONS**



**CLARITY CHARACTERISTICS**



**KEY TO SYMBOLS**

Red symbols indicate internal characteristics.  
Green symbols indicate external characteristics.

**COLOR**

D E F G H I J Faint Very Light Light

**CLARITY**

IF WS<sup>1-2</sup> VS<sup>1-2</sup> SI<sup>1-2</sup> I<sup>1-3</sup>  
Internally Flawless Very Very Slightly Included Very Slightly Included Slightly Included Included



January 17, 2025  
IGI Report Number **LG673411213**  
Description **LABORATORY GROWN DIAMOND**  
Shape and Cutting Style **PRINCESS CUT**  
Measurements **6.08 X 6.04 X 4.26 MM**  
**GRADING RESULTS**  
Carat Weight **1.33 CARAT**  
Color Grade **F**  
Clarity Grade **VVS 1**  
**ADDITIONAL GRADING INFORMATION**  
Polish **EXCELLENT**  
Symmetry **EXCELLENT**  
Fluorescence **NONE**  
Inscription(s) **IGI LG673411213**

Comments: This Laboratory Grown Diamond was created by Chemical Vapor Deposition (CVD) growth process. Type IIa