



ELECTRONIC COPY

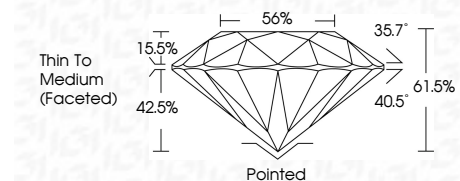
LG674501460  
Report verification at igi.org



January 6, 2025  
IGI Report Number **LG674501460**  
Description **LABORATORY GROWN DIAMOND**  
Shape and Cutting Style **ROUND BRILLIANT**  
Measurements **7.77 - 7.80 X 4.79 MM**

GRADING RESULTS

Carat Weight **1.78 CARAT**  
Color Grade **E**  
Clarity Grade **VS 1**  
Cut Grade **IDEAL**



ADDITIONAL GRADING INFORMATION

Polish **EXCELLENT**  
Symmetry **EXCELLENT**  
Fluorescence **NONE**  
Inscription(s) **IGI LG674501460**  
Comments: This Laboratory Grown Diamond was created by Chemical Vapor Deposition (CVD) growth process. Type IIa



January 6, 2025  
IGI Report No LG674501460  
ROUND BRILLIANT  
1.78 CARAT  
E  
VS 1  
IDEAL  
61.5%  
56%  
Thin To Medium (Faceted)  
Pointed  
EXCELLENT  
EXCELLENT  
NONE  
IGI LG674501460  
Comments: This Laboratory Grown Diamond was created by Chemical Vapor Deposition (CVD) growth process. Type IIa

LABORATORY GROWN DIAMOND REPORT

January 6, 2025  
IGI Report Number **LG674501460**  
Description **LABORATORY GROWN DIAMOND**  
Shape and Cutting Style **ROUND BRILLIANT**  
Measurements **7.77 - 7.80 X 4.79 MM**

GRADING RESULTS

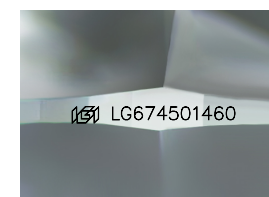
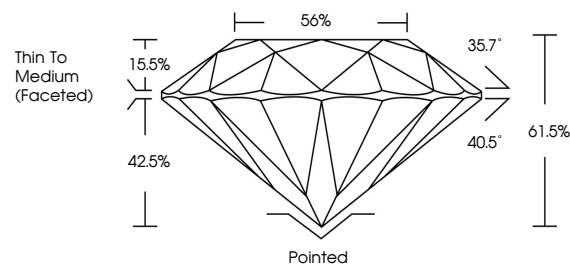
Carat Weight **1.78 CARAT**  
Color Grade **E**  
Clarity Grade **VS 1**  
Cut Grade **IDEAL**

ADDITIONAL GRADING INFORMATION

Polish **EXCELLENT**  
Symmetry **EXCELLENT**  
Fluorescence **NONE**  
Inscription(s) **IGI LG674501460**

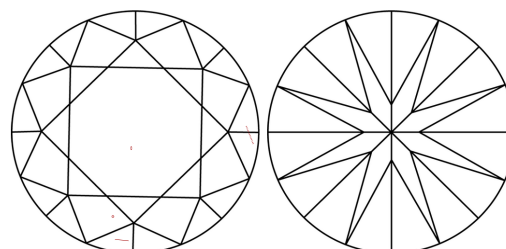
Comments: This Laboratory Grown Diamond was created by Chemical Vapor Deposition (CVD) growth process. Type IIa

PROPORTIONS



Sample Image Used

CLARITY CHARACTERISTICS



KEY TO SYMBOLS

Red symbols indicate internal characteristics.  
Green symbols indicate external characteristics.

COLOR

D E F G H I J Faint Very Light Light

CLARITY

IF WS<sup>1-2</sup> VS<sup>1-2</sup> SI<sup>1-2</sup> I<sup>1-3</sup>  
Internally Flawless Very Very Slightly Included Very Slightly Included Slightly Included Included

