



**ELECTRONIC COPY**

LG674503461  
Report verification at igi.org



January 11, 2025

IGI Report Number **LG674503461**

Description **LABORATORY GROWN DIAMOND**

Shape and Cutting Style **OVAL MODIFIED BRILLIANT**

Measurements **9.36 X 6.50 X 4.37 MM**

**GRADING RESULTS**

Carat Weight **2.10 CARATS**

Color Grade **FANCY INTENSE YELLOW**

Clarity Grade **VS 1**

January 11, 2025

IGI Report Number **LG674503461**

Description **LABORATORY GROWN DIAMOND**

Shape and Cutting Style **OVAL MODIFIED BRILLIANT**

Measurements **9.36 X 6.50 X 4.37 MM**

**GRADING RESULTS**

Carat Weight **2.10 CARATS**

Color Grade **FANCY INTENSE YELLOW**

Clarity Grade **VS 1**

**ADDITIONAL GRADING INFORMATION**

Polish **EXCELLENT**

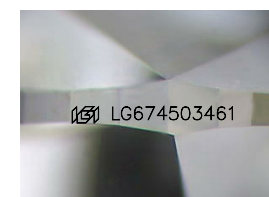
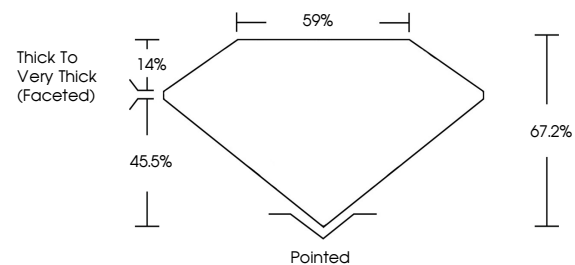
Symmetry **EXCELLENT**

Fluorescence **NONE**

Inscription(s) **IGI LG674503461**

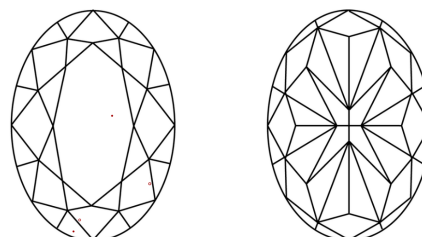
Comments: This Laboratory Grown Diamond was created by Chemical Vapor Deposition (CVD) growth process.

**PROPORTIONS**



Sample Image Used

**CLARITY CHARACTERISTICS**



**KEY TO SYMBOLS**

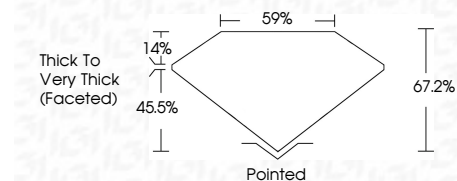
Red symbols indicate internal characteristics.  
Green symbols indicate external characteristics.

**COLOR**

D E F G H I J Faint Very Light Light

**CLARITY**

IF	VS <sup>1-2</sup>	VS <sup>1-2</sup>	SI <sup>1-2</sup>	I <sup>1-3</sup>
Internally Flawless	Very Very Slightly Included	Very Slightly Included	Slightly Included	Included



**ADDITIONAL GRADING INFORMATION**

Polish **EXCELLENT**

Symmetry **EXCELLENT**

Fluorescence **NONE**

Inscription(s) **IGI LG674503461**

Comments: This Laboratory Grown Diamond was created by Chemical Vapor Deposition (CVD) growth process.



**IGI**



January 11, 2025  
IGI Report No LG674503461  
OVAL MODIFIED BRILLIANT

2.10 CARATS  
FANCY INTENSE YELLOW

9.36 X 6.50 X 4.37 MM

VS 1

67.2%  
59%

Thick to Very Thick (Faceted)

Pointed  
EXCELLENT  
EXCELLENT  
NONE  
IGI LG674503461

Comments: This Laboratory Grown Diamond was created by Chemical Vapor Deposition (CVD) growth process.