



ELECTRONIC COPY

LG674511724
Report verification at igi.org



January 7, 2025
IGI Report Number LG674511724
Description LABORATORY GROWN DIAMOND
Shape and Cutting Style ROUND BRILLIANT
Measurements 10.16 - 10.23 X 6.30 MM
GRADING RESULTS
Carat Weight 4.03 CARATS
Color Grade E
Clarity Grade INTERNALLY FLAWLESS
Cut Grade IDEAL

January 7, 2025
IGI Report Number LG674511724
Description LABORATORY GROWN DIAMOND
Shape and Cutting Style ROUND BRILLIANT
Measurements 10.16 - 10.23 X 6.30 MM

GRADING RESULTS

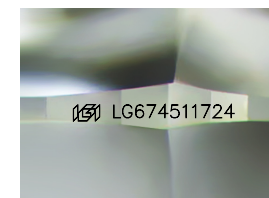
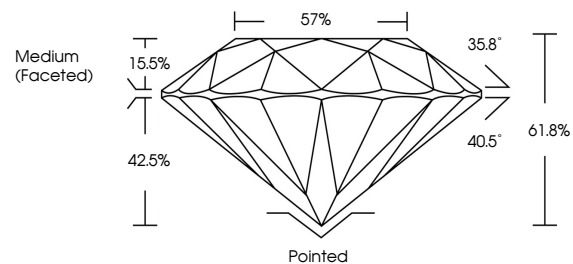
Carat Weight 4.03 CARATS
Color Grade E
Clarity Grade INTERNALLY FLAWLESS
Cut Grade IDEAL

ADDITIONAL GRADING INFORMATION

Polish EXCELLENT
Symmetry EXCELLENT
Fluorescence NONE
Inscription(s) IGI LG674511724

Comments: As Grown - No indication of post-growth treatment.
This Laboratory Grown Diamond was created by High Pressure High Temperature (HPHT) growth process.
Type II

PROPORTIONS



Sample Image Used

CLARITY CHARACTERISTICS



KEY TO SYMBOLS

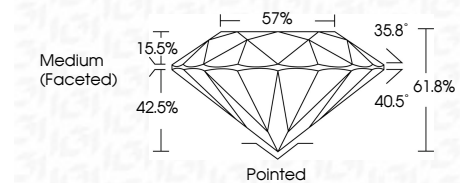
Red symbols indicate internal characteristics.
Green symbols indicate external characteristics.

COLOR

D E F G H I J Faint Very Light Light

CLARITY

IF VS 1-2 VS 1-2 SI 1-2 I 1-3
Internally Flawless Very Very Slightly Included Very Slightly Included Slightly Included Included



ADDITIONAL GRADING INFORMATION

Polish EXCELLENT
Symmetry EXCELLENT
Fluorescence NONE
Inscription(s) IGI LG674511724
Comments: As Grown - No indication of post-growth treatment.
This Laboratory Grown Diamond was created by High Pressure High Temperature (HPHT) growth process.
Type II



January 7, 2025
IGI Report No LG674511724
ROUND BRILLIANT
10.16 - 10.23 X 6.30 MM
4.03 CARATS
E
Color Grade
Clarity Grade IF
Depth 61.8%
Table 57%
Girdle Medium (Faceted)
Culet Pointed
Polish EXCELLENT
Symmetry EXCELLENT
Fluorescence NONE
Inscription(s) IGI LG674511724
Comments: As Grown - No indication of post-growth treatment.
This Laboratory Grown Diamond was created by High Pressure High Temperature (HPHT) growth process.
Type II