



# INTERNATIONAL GEMOLOGICAL INSTITUTE

ELECTRONIC COPY

LG674546848



January 15, 2025

IGI Report Number LG674546848

OVAL BRILLIANT

LABORATORY GROWN DIAMOND

6.42 X 4.18 X 2.30 MM

Carat Weight 0.40 CARAT

Color Grade D

Clarity Grade VS 2

Polish VERY GOOD

Symmetry VERY GOOD

Fluorescence NONE

Inscription(s) IGI LG674546848

Comments: This Laboratory Grown Diamond was created by Chemical Vapor Deposition (CVD) growth process. Type IIa

## LABORATORY GROWN DIAMOND REPORT

January 15, 2025

IGI Report Number

LG674546848

Description

LABORATORY GROWN DIAMOND

Shape and Cutting Style

OVAL BRILLIANT

Measurements

6.42 X 4.18 X 2.30 MM

### GRADING RESULTS

Carat Weight 0.40 CARAT

Color Grade D

Clarity Grade VS 2

### ADDITIONAL GRADING INFORMATION

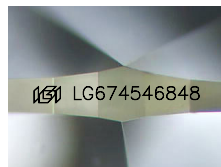
Polish VERY GOOD

Symmetry VERY GOOD

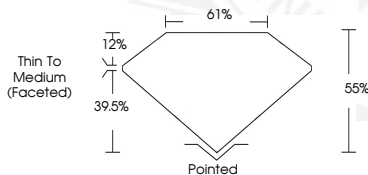
Fluorescence NONE

Inscription(s) IGI LG674546848

Comments: This Laboratory Grown Diamond was created by Chemical Vapor Deposition (CVD) growth process. Type IIa



Sample Image Used



January 15, 2025

IGI Report Number LG674546848

OVAL BRILLIANT

LABORATORY GROWN DIAMOND

6.42 X 4.18 X 2.30 MM

Carat Weight 0.40 CARAT

Color Grade D

Clarity Grade VS 2

Polish VERY GOOD

Symmetry VERY GOOD

Fluorescence NONE

Inscription(s) IGI LG674546848

Comments: This Laboratory Grown Diamond was created by Chemical Vapor Deposition (CVD) growth process. Type IIa



THIS DOCUMENT WAS PRODUCED WITH THE FOLLOWING SECURITY MEASURES: SPECIAL DOCUMENT PAPER, INK SCREENS, WATERMARK, BACKGROUND DESIGNS, HOLOGRAM AND OTHER SECURITY FEATURES NOT LISTED AND DO EXCEED DOCUMENT SECURITY INDUSTRY GUIDELINES.

For terms & conditions and to verify this report, please visit [www.igi.org](http://www.igi.org)