



INTERNATIONAL GEMOLOGICAL INSTITUTE

ELECTRONIC COPY

LG674546952



January 13, 2025

IGI Report Number LG674546952

OVAL BRILLIANT

LABORATORY GROWN DIAMOND

5.66 X 4.23 X 2.60 MM

Carat Weight 0.38 CARAT

Color Grade E

Clarity Grade VS 1

Polish VERY GOOD

Symmetry GOOD

Fluorescence NONE

Inscription(s) IGI LG674546952

Comments: This Laboratory Grown Diamond was created by Chemical Vapor Deposition (CVD) growth process. Type IIa

LABORATORY GROWN DIAMOND REPORT

January 13, 2025

IGI Report Number

LG674546952

Description

LABORATORY GROWN DIAMOND

Shape and Cutting Style

OVAL BRILLIANT

Measurements

5.66 X 4.23 X 2.60 MM

GRADING RESULTS

Carat Weight

0.38 CARAT

Color Grade

E

Clarity Grade

VS 1

ADDITIONAL GRADING INFORMATION

Polish

VERY GOOD

Symmetry

GOOD

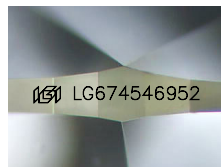
Fluorescence

NONE

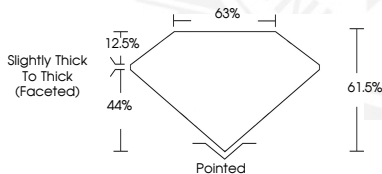
Inscription(s)

IGI LG674546952

Comments: This Laboratory Grown Diamond was created by Chemical Vapor Deposition (CVD) growth process. Type IIa



Sample Image Used



January 13, 2025

IGI Report Number LG674546952

OVAL BRILLIANT

LABORATORY GROWN DIAMOND

5.66 X 4.23 X 2.60 MM

Carat Weight 0.38 CARAT

Color Grade E

Clarity Grade VS 1

Polish VERY GOOD

Symmetry GOOD

Fluorescence NONE

Inscription(s) IGI LG674546952

Comments: This Laboratory Grown Diamond was created by Chemical Vapor Deposition (CVD) growth process. Type IIa



THIS DOCUMENT WAS PRODUCED WITH THE FOLLOWING SECURITY MEASURES: SPECIAL DOCUMENT PAPER, INK SCREENS, WATERMARK BACKGROUND DESIGN, HOLOGRAM AND OTHER SECURITY FEATURES NOT LISTED AND DO EXCEED DOCUMENT SECURITY INDUSTRY GUIDELINES.

For terms & conditions and to verify this report, please visit www.igi.org