



ELECTRONIC COPY

LG675556393
Report verification at igi.org

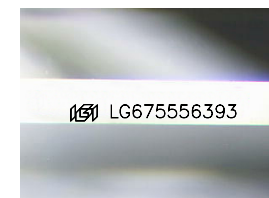


January 18, 2025
IGI Report Number **LG675556393**
Description **LABORATORY GROWN DIAMOND**
Shape and Cutting Style **MODIFIED SQUARE EMERALD CUT**

Measurements **7.22 X 6.86 X 4.50 MM**

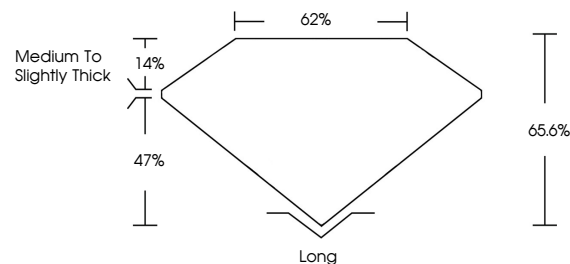
GRADING RESULTS

Carat Weight **2.10 CARATS**
Color Grade **D**
Clarity Grade **VVS 1**

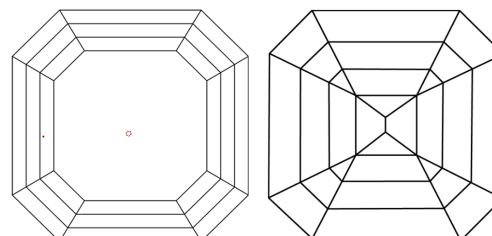


Sample Image Used

PROPORTIONS



CLARITY CHARACTERISTICS



KEY TO SYMBOLS

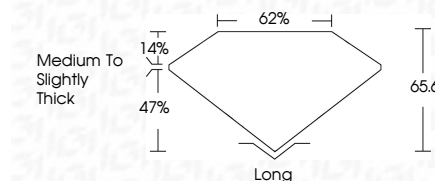
Red symbols indicate internal characteristics.
Green symbols indicate external characteristics.

COLOR

D E F G H I J Faint Very Light Light

CLARITY

IF	WS ¹⁻²	VS ¹⁻²	SI ¹⁻²	I ¹⁻³
Internally Flawless	Very Very Slightly Included	Very Slightly Included	Slightly Included	Included



ADDITIONAL GRADING INFORMATION

Polish **EXCELLENT**
Symmetry **EXCELLENT**
Fluorescence **NONE**
Inscription(s) **(IGI) LG675556393**
Comments: This Laboratory Grown Diamond was created by Chemical Vapor Deposition (CVD) growth process. Type IIa



IGI



January 18, 2025
IGI Report No LG675556393
MODIFIED SQUARE EMERALD CUT
2.10 CARATS
D
2.10 CARATS
D
7.22 X 6.86 X 4.50 MM
Color Grade D
Clarity Grade VVS 1
Table 65.6%
Girdle 62%
Medium to Slightly Thick
Culet Long
Polish EXCELLENT
Symmetry EXCELLENT
Fluorescence NONE
Inscription(s) (IGI) LG675556393
Comments: This Laboratory Grown Diamond was created by Chemical Vapor Deposition (CVD) growth process. Type IIa