



**ELECTRONIC COPY**

LG675566503  
Report verification at igi.org



January 23, 2025

IGI Report Number **LG675566503**

Description **LABORATORY GROWN DIAMOND**

Shape and Cutting Style **CUT CORNERED  
RECTANGULAR MODIFIED  
BRILLIANT**

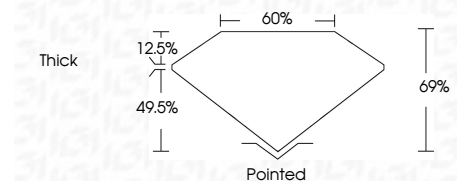
Measurements **11.46 X 8.29 X 5.72 MM**

**GRADING RESULTS**

Carat Weight **5.04 CARATS**

Color Grade **FANCY VIVID YELLOW**

Clarity Grade **VS 1**



**ADDITIONAL GRADING INFORMATION**

Polish **EXCELLENT**

Symmetry **EXCELLENT**

Fluorescence **NONE**

Inscription(s) **IGI LG675566503**

Comments: This Laboratory Grown Diamond was created by Chemical Vapor Deposition (CVD) growth process.



January 23, 2025

IGI Report Number **LG675566503**

Description **LABORATORY GROWN DIAMOND**

Shape and Cutting Style **CUT CORNERED RECTANGULAR  
MODIFIED BRILLIANT**

Measurements **11.46 X 8.29 X 5.72 MM**

**GRADING RESULTS**

Carat Weight **5.04 CARATS**

Color Grade **FANCY VIVID YELLOW**

Clarity Grade **VS 1**

**ADDITIONAL GRADING INFORMATION**

Polish **EXCELLENT**

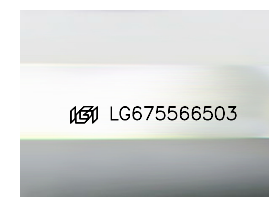
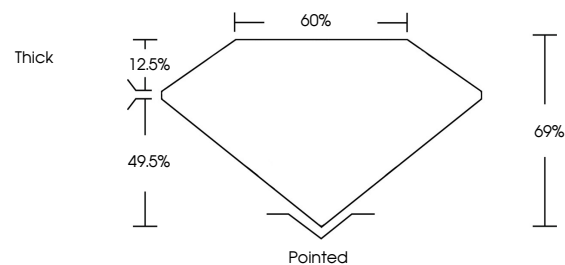
Symmetry **EXCELLENT**

Fluorescence **NONE**

Inscription(s) **IGI LG675566503**

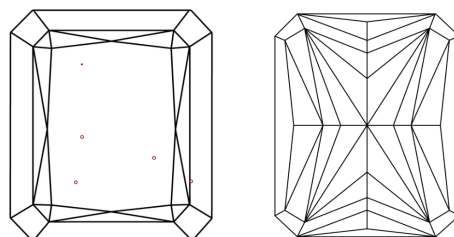
Comments: This Laboratory Grown Diamond was created by Chemical Vapor Deposition (CVD) growth process.

**PROPORTIONS**



Sample Image Used

**CLARITY CHARACTERISTICS**



**KEY TO SYMBOLS**

Red symbols indicate internal characteristics.  
Green symbols indicate external characteristics.

**COLOR**

D E F G H I J Faint Very Light Light

**CLARITY**

IF WS<sup>1-2</sup> VS<sup>1-2</sup> SI<sup>1-2</sup> I<sup>1-3</sup>

Internally Flawless Very Very Slightly Included Very Slightly Included Slightly Included Included

January 23, 2025  
IGI Report No LG675566503  
CUT CORNERED RECT. MODIFIED BRILLIANT

11.46 X 8.29 X 5.72 MM  
5.04 CARATS  
FANCY VIVID YELLOW  
VS 1  
69%  
60%  
Thick

Pointed  
EXCELLENT  
EXCELLENT  
NONE  
IGI LG675566503

Comments: This Laboratory Grown Diamond was created by Chemical Vapor Deposition (CVD) growth process.

