



ELECTRONIC COPY

LG675572891
Report verification at igi.org



January 11, 2025

IGI Report Number **LG675572891**

Description **LABORATORY GROWN DIAMOND**

Shape and Cutting Style **CUSHION BRILLIANT**

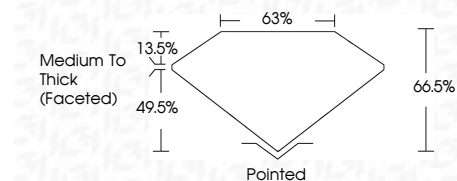
Measurements **9.48 X 7.08 X 4.71 MM**

GRADING RESULTS

Carat Weight **2.47 CARATS**

Color Grade **D**

Clarity Grade **VS 2**



ADDITIONAL GRADING INFORMATION

Polish **EXCELLENT**

Symmetry **EXCELLENT**

Fluorescence **NONE**

Inscription(s) **IGI LG675572891**

Comments: This Laboratory Grown Diamond was created by Chemical Vapor Deposition (CVD) growth process. Type IIa



January 11, 2025	IGI Report No LG675572891	2.47 CARATS	D
CUSHION BRILLIANT	9.48 X 7.08 X 4.71 MM	VS 2	66.5%
Carat Weight	Color Grade	Clarity Grade	Table
Depth	Girdle	Medium To Thick (Faceted)	Pointed
Culet	Polish	Symmetry	EXCELLENT
Fluorescence	INSCRIPTION(S)	IGI LG675572891	NONE

Comments: This Laboratory Grown Diamond was created by Chemical Vapor Deposition (CVD) growth process. Type IIa

LABORATORY GROWN DIAMOND REPORT

January 11, 2025

IGI Report Number **LG675572891**

Description **LABORATORY GROWN DIAMOND**

Shape and Cutting Style **CUSHION BRILLIANT**

Measurements **9.48 X 7.08 X 4.71 MM**

GRADING RESULTS

Carat Weight **2.47 CARATS**

Color Grade **D**

Clarity Grade **VS 2**

ADDITIONAL GRADING INFORMATION

Polish **EXCELLENT**

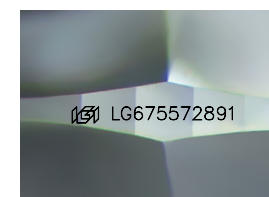
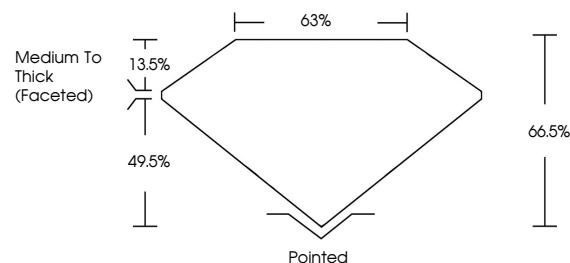
Symmetry **EXCELLENT**

Fluorescence **NONE**

Inscription(s) **IGI LG675572891**

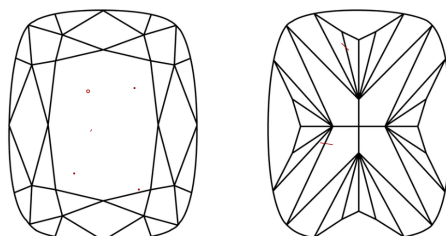
Comments: This Laboratory Grown Diamond was created by Chemical Vapor Deposition (CVD) growth process. Type IIa

PROPORTIONS



Sample Image Used

CLARITY CHARACTERISTICS



KEY TO SYMBOLS

Red symbols indicate internal characteristics.
Green symbols indicate external characteristics.

COLOR

D E F G H I J Faint Very Light Light

CLARITY

IF VS¹⁻² VS¹⁻² SI¹⁻² I¹⁻³

Internally Flawless Very Very Slightly Included Very Slightly Included Slightly Included Included

