



**ELECTRONIC COPY**

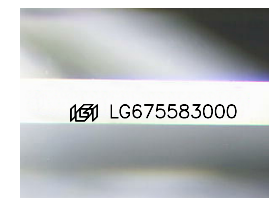
LG675583000  
Report verification at igi.org



January 12, 2025  
IGI Report Number **LG675583000**  
Description **LABORATORY GROWN DIAMOND**  
Shape and Cutting Style **EMERALD CUT**  
Measurements **7.75 X 5.71 X 3.77 MM**

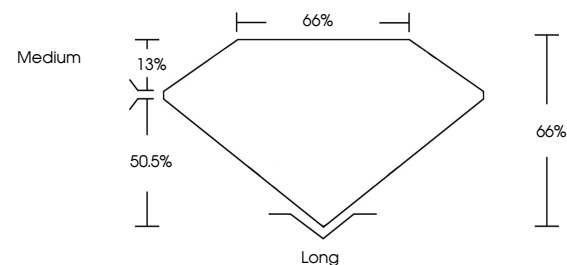
**GRADING RESULTS**

Carat Weight **1.59 CARAT**  
Color Grade **D**  
Clarity Grade **VVS 1**

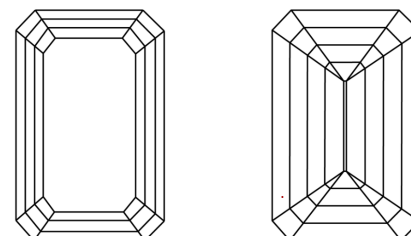


Sample Image Used

**PROPORTIONS**



**CLARITY CHARACTERISTICS**



**KEY TO SYMBOLS**

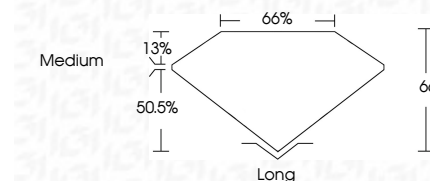
Red symbols indicate internal characteristics.  
Green symbols indicate external characteristics.

**COLOR**

D E F G H I J Faint Very Light Light

**CLARITY**

IF	VS <sup>1-2</sup>	VS <sup>1-2</sup>	SI <sup>1-2</sup>	I <sup>1-3</sup>
Internally Flawless	Very Very Slightly Included	Very Slightly Included	Slightly Included	Included



**ADDITIONAL GRADING INFORMATION**

Polish **EXCELLENT**  
Symmetry **EXCELLENT**  
Fluorescence **NONE**  
Inscription(s) **IGI LG675583000**  
Comments: This Laboratory Grown Diamond was created by Chemical Vapor Deposition (CVD) growth process. Type IIa



**IGI**



January 12, 2025  
IGI Report No LG675583000  
**EMERALD CUT**

**1.59 CARAT**  
Carat Weight **D**  
Color Grade **VVS 1**  
Clarity Grade **66%**  
Depth **66%**  
Table **Medium**  
Girdle **Long**  
Culet **EXCELLENT**  
Polish **EXCELLENT**  
Symmetry **NONE**  
Fluorescence **NONE**  
Inscription(s) **IGI LG675583000**

Comments: This Laboratory Grown Diamond was created by Chemical Vapor Deposition (CVD) growth process. Type IIa