



ELECTRONIC COPY

LABORATORY GROWN DIAMOND REPORT

January 18, 2025	
IGI Report Number	LG677502443
Description	LABORATORY GROWN DIAMOND
Shape and Cutting Style	CUT CORNERED RECTANGULAR MODIFIED BRILLIANT
Measurements	11.41 X 7.69 X 5.17 MM

GRADING RESULTS

Carat Weight	3.94 CARATS
Color Grade	G
Clarity Grade	VS 2

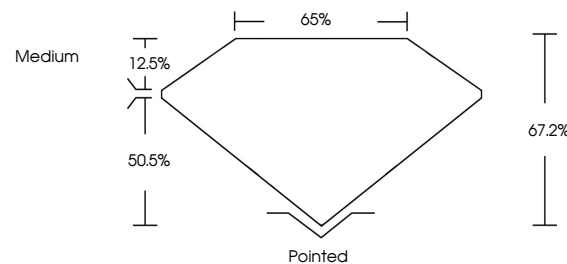
ADDITIONAL GRADING INFORMATION

Polish	EXCELLENT
Symmetry	EXCELLENT
Fluorescence	NONE
Inscription(s)	16 LG677502443

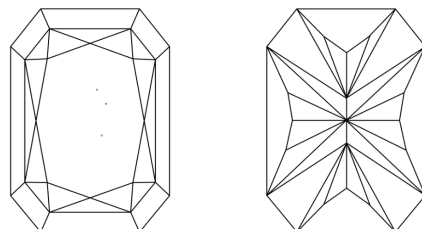
Comments: This Laboratory Grown Diamond was created by Chemical Vapor Deposition (CVD) growth process.
Type IIa

LG677502443
Report verification at igi.org

PROPORTIONS

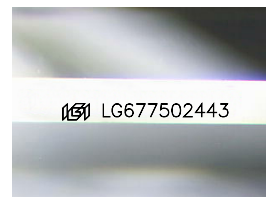


CLARITY CHARACTERISTICS



KEY TO SYMBOLS

Red symbols indicate internal characteristics.
Green symbols indicate external characteristics.



Sample Image Used

COLOR

D E F G H I J Faint Very Light Light

CLARITY

IF	VS ¹⁻²	VS ¹⁻²	SI ¹⁻²	I ¹⁻³
Internally Flawless	Very Very Slightly Included	Very Slightly Included	Slightly Included	Included

LABORATORY GROWN DIAMOND REPORT



January 18, 2025	
IGI Report Number	LG677502443
Description	LABORATORY GROWN DIAMOND
Shape and Cutting Style	CUT CORNERED RECTANGULAR MODIFIED BRILLIANT
Measurements	11.41 X 7.69 X 5.17 MM

GRADING RESULTS

Carat Weight	3.94 CARATS
Color Grade	G
Clarity Grade	VS 2

ADDITIONAL GRADING INFORMATION

Polish	EXCELLENT
Symmetry	EXCELLENT
Fluorescence	NONE
Inscription(s)	 LG6677502443
Comments: This Laboratory Grown Diamond was created by Chemical Vapor Deposition (CVD) growth process.	
Type IIa	



© IGI 2020, International Gemological Institute

FD - 10 20

www.igi.org

January 18, 2025	GI Report No LG67792483	GI CUT CORNERED RECT. MODIFIED BRILLIANT
1.141 CT	1.141 CT 7.69 X 5.17 MM	
Color Grade		3.94 CABATS
Clarity Grade		G
Depth		VS 2
Table		67.2%
Girdle		65%
		Medium
Color		Painted
Fluorescence		EXCELLENT
Symmetry		EXCELLENT
Measurements (mm)		NONE
Measurements (mm)		689 LG67792483

Comments: Laboratory Grown Diamond was created by Chemical Vapor Deposition (CVD) growth process.

Type IIA