



ELECTRONIC COPY

LG677503179
Report verification at igi.org



January 23, 2025
IGI Report Number **LG677503179**
Description **LABORATORY GROWN DIAMOND**
Shape and Cutting Style **CUT CORNERED
RECTANGULAR MODIFIED
BRILLIANT**
Measurements **8.68 X 6.18 X 4.23 MM**
GRADING RESULTS
Carat Weight **2.09 CARATS**
Color Grade **FANCY INTENSE YELLOW**
Clarity Grade **VS 1**

LABORATORY GROWN DIAMOND REPORT

January 23, 2025
IGI Report Number **LG677503179**
Description **LABORATORY GROWN DIAMOND**
Shape and Cutting Style **CUT CORNERED RECTANGULAR
MODIFIED BRILLIANT**
Measurements **8.68 X 6.18 X 4.23 MM**

GRADING RESULTS

Carat Weight **2.09 CARATS**
Color Grade **FANCY INTENSE YELLOW**
Clarity Grade **VS 1**

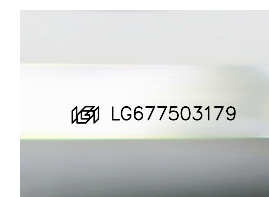
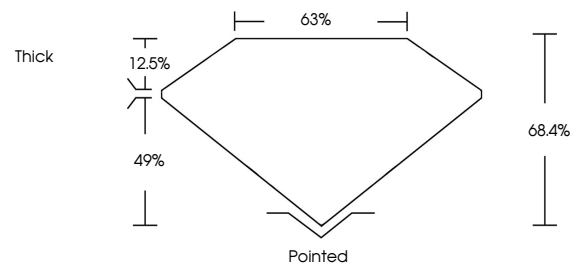
ADDITIONAL GRADING INFORMATION

Polish **EXCELLENT**
Symmetry **EXCELLENT**
Fluorescence **NONE**
Inscription(s) **IGI LG677503179**

Comments: This Laboratory Grown Diamond was created by Chemical Vapor Deposition (CVD) growth process.

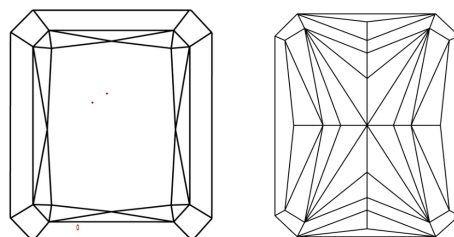
Secondary color: Grey

PROPORTIONS



Sample Image Used

CLARITY CHARACTERISTICS



KEY TO SYMBOLS

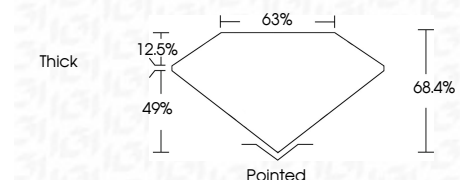
Red symbols indicate internal characteristics.
Green symbols indicate external characteristics.

COLOR

D E F G H I J Faint Very Light Light

CLARITY

IF	VS ¹⁻²	VS ¹⁻²	SI ¹⁻²	I ¹⁻³
Internally Flawless	Very Very Slightly Included	Very Slightly Included	Slightly Included	Included



ADDITIONAL GRADING INFORMATION

Polish **EXCELLENT**
Symmetry **EXCELLENT**
Fluorescence **NONE**
Inscription(s) **IGI LG677503179**
Comments: This Laboratory Grown Diamond was created by Chemical Vapor Deposition (CVD) growth process.
Secondary color: Grey



January 23, 2025
IGI Report No LG677503179
CUT CORNERED RECT. MODIFIED BRILLIANT
8.68 X 6.18 X 4.23 MM
2.09 CARATS
FANCY INTENSE YELLOW
VS 1
68.4%
63%
Thick
Pointed
EXCELLENT
EXCELLENT
NONE
IGI LG677503179
Comments: This Laboratory Grown Diamond was created by Chemical Vapor Deposition (CVD) growth process.
Secondary color: Grey