



ELECTRONIC COPY

LG677567731
Report verification at igi.org



January 27, 2025

IGI Report Number **LG677567731**

Description **LABORATORY GROWN DIAMOND**

Shape and Cutting Style **CUT CORNERED
RECTANGULAR MODIFIED
BRILLIANT**

Measurements **8.79 X 6.07 X 4.25 MM**

GRADING RESULTS

Carat Weight **2.07 CARATS**

Color Grade **FANCY INTENSE YELLOW**

Clarity Grade **VS 2**

LABORATORY GROWN DIAMOND REPORT

January 27, 2025

IGI Report Number **LG677567731**

Description **LABORATORY GROWN DIAMOND**

Shape and Cutting Style **CUT CORNERED RECTANGULAR
MODIFIED BRILLIANT**

Measurements **8.79 X 6.07 X 4.25 MM**

GRADING RESULTS

Carat Weight **2.07 CARATS**

Color Grade **FANCY INTENSE YELLOW**

Clarity Grade **VS 2**

ADDITIONAL GRADING INFORMATION

Polish **EXCELLENT**

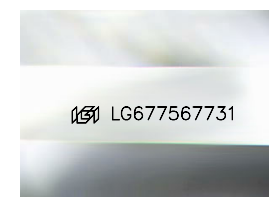
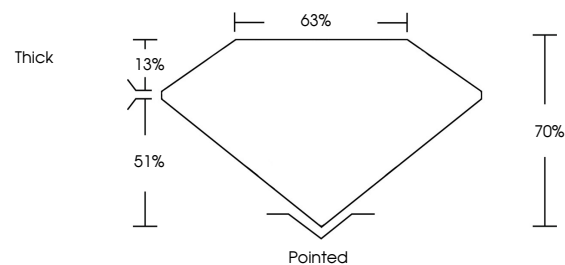
Symmetry **EXCELLENT**

Fluorescence **NONE**

Inscription(s) **IGI LG677567731**

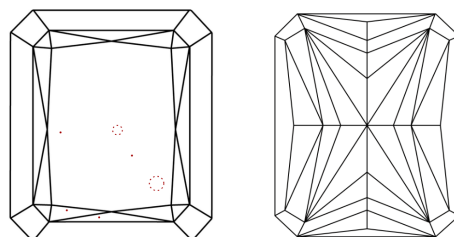
Comments: This Laboratory Grown Diamond was created by Chemical Vapor Deposition (CVD) growth process.

PROPORTIONS



Sample Image Used

CLARITY CHARACTERISTICS



KEY TO SYMBOLS

Red symbols indicate internal characteristics.
Green symbols indicate external characteristics.

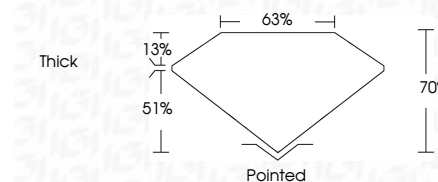
COLOR

D E F G H I J Faint Very Light Light

CLARITY

IF WS¹⁻² VS¹⁻² SI¹⁻² I¹⁻³

Internally Flawless Very Very Slightly Included Very Slightly Included Slightly Included Included



ADDITIONAL GRADING INFORMATION

Polish **EXCELLENT**

Symmetry **EXCELLENT**

Fluorescence **NONE**

Inscription(s) **IGI LG677567731**

Comments: This Laboratory Grown Diamond was created by Chemical Vapor Deposition (CVD) growth process.



IGI



January 27, 2025
IGI Report No. LG677567731
CUT CORNERED RECT. MODIFIED BRILLIANT
8.79 X 6.07 X 4.25 MM
2.07 CARATS
FANCY INTENSE YELLOW
VS 2
70%
63%
Thick
Pointed
EXCELLENT
EXCELLENT
NONE
IGI LG677567731
Comments: This Laboratory Grown Diamond was created by Chemical Vapor Deposition (CVD) growth process.