



ELECTRONIC COPY

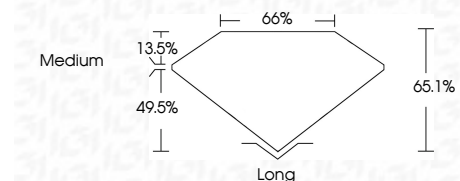
LG677578199
Report verification at igi.org



January 23, 2025
IGI Report Number **LG677578199**
Description **LABORATORY GROWN DIAMOND**
Shape and Cutting Style **EMERALD CUT**
Measurements **11.60 X 8.30 X 5.40 MM**

GRADING RESULTS

Carat Weight **5.04 CARATS**
Color Grade **E**
Clarity Grade **VS 2**



ADDITIONAL GRADING INFORMATION

Polish **EXCELLENT**
Symmetry **EXCELLENT**
Fluorescence **NONE**
Inscription(s) **IGI LG677578199**
Comments: This Laboratory Grown Diamond was created by Chemical Vapor Deposition (CVD) growth process. Type IIa



January 23, 2025
IGI Report No LG677578199
EMERALD CUT
11.60 X 8.30 X 5.40 MM
5.04 CARATS
Color Grade **E**
Clarity Grade **VS 2**
Depth **65.1%**
Table **66%**
Girdle **Medium**
Culet **Long**
Polish **EXCELLENT**
Symmetry **EXCELLENT**
Fluorescence **NONE**
Inscription(s) **IGI LG677578199**
Comments: This Laboratory Grown Diamond was created by Chemical Vapor Deposition (CVD) growth process. Type IIa

LABORATORY GROWN DIAMOND REPORT

January 23, 2025
IGI Report Number **LG677578199**
Description **LABORATORY GROWN DIAMOND**
Shape and Cutting Style **EMERALD CUT**
Measurements **11.60 X 8.30 X 5.40 MM**

GRADING RESULTS

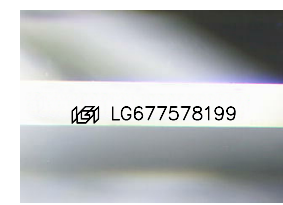
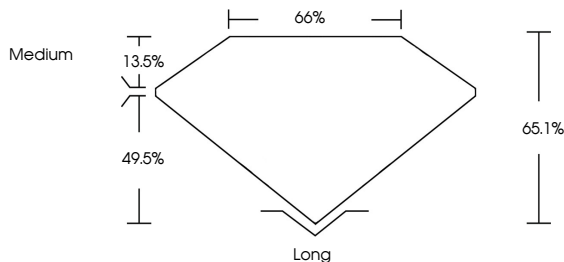
Carat Weight **5.04 CARATS**
Color Grade **E**
Clarity Grade **VS 2**

ADDITIONAL GRADING INFORMATION

Polish **EXCELLENT**
Symmetry **EXCELLENT**
Fluorescence **NONE**
Inscription(s) **IGI LG677578199**

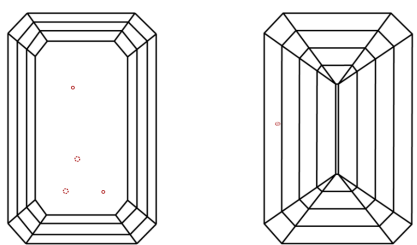
Comments: This Laboratory Grown Diamond was created by Chemical Vapor Deposition (CVD) growth process. Type IIa

PROPORTIONS



Sample Image Used

CLARITY CHARACTERISTICS



KEY TO SYMBOLS

Red symbols indicate internal characteristics.
Green symbols indicate external characteristics.

COLOR

D	E	F	G	H	I	J	Faint	Very Light	Light
---	---	---	---	---	---	---	-------	------------	-------

CLARITY

IF	VS ¹⁻²	VS ¹⁻²	SI ¹⁻²	I ¹⁻³
Internally Flawless	Very Very Slightly Included	Very Slightly Included	Slightly Included	Included

