



ELECTRONIC COPY

LG677582563
Report verification at igi.org



January 29, 2025
IGI Report Number **LG677582563**
Description **LABORATORY GROWN DIAMOND**

Shape and Cutting Style **CUT CORNERED
RECTANGULAR MODIFIED
BRILLIANT**

Measurements **10.87 X 7.66 X 5.32 MM**

GRADING RESULTS

Carat Weight **4.09 CARATS**
Color Grade **FANCY INTENSE YELLOW**
Clarity Grade **SI 1**

LABORATORY GROWN DIAMOND REPORT

January 29, 2025
IGI Report Number **LG677582563**
Description **LABORATORY GROWN DIAMOND**
Shape and Cutting Style **CUT CORNERED RECTANGULAR
MODIFIED BRILLIANT**
Measurements **10.87 X 7.66 X 5.32 MM**

GRADING RESULTS

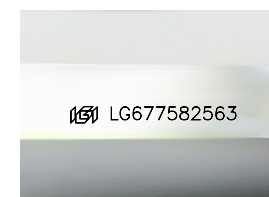
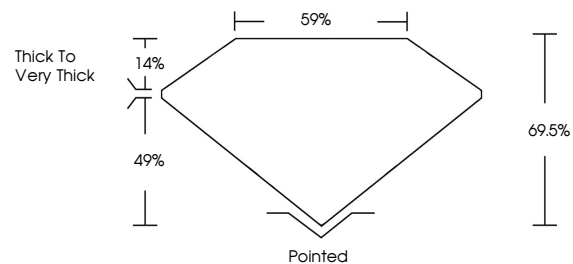
Carat Weight **4.09 CARATS**
Color Grade **FANCY INTENSE YELLOW**
Clarity Grade **SI 1**

ADDITIONAL GRADING INFORMATION

Polish **EXCELLENT**
Symmetry **EXCELLENT**
Fluorescence **NONE**
Inscription(s) **IGI LG677582563**

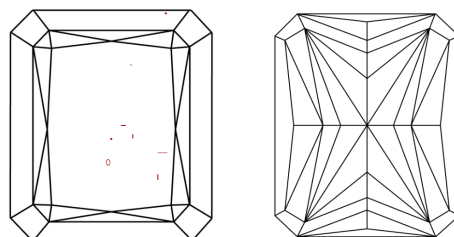
Comments: This Laboratory Grown Diamond was created by Chemical Vapor Deposition (CVD) growth process.

PROPORTIONS



Sample Image Used

CLARITY CHARACTERISTICS



KEY TO SYMBOLS

Red symbols indicate internal characteristics.
Green symbols indicate external characteristics.

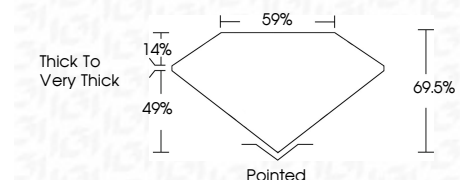
COLOR

D E F G H I J Faint Very Light Light

CLARITY

IF WS¹⁻² VS¹⁻² SI¹⁻² I¹⁻³

Internally Flawless Very Very Slightly Included Very Slightly Included Slightly Included Included



ADDITIONAL GRADING INFORMATION

Polish **EXCELLENT**
Symmetry **EXCELLENT**
Fluorescence **NONE**
Inscription(s) **IGI LG677582563**
Comments: This Laboratory Grown Diamond was created by Chemical Vapor Deposition (CVD) growth process.



January 29, 2025
IGI Report No. LG677582563
CUT CORNERED RECT. MODIFIED BRILLIANT
4.09 CARATS
Carat Weight
Color Grade FANCY INTENSE YELLOW
Clarity Grade SI 1
Depth 69.5%
Table 59%
Girdle Thick to Very Thick
Culet Pointed
Polish EXCELLENT
Symmetry EXCELLENT
Fluorescence NONE
Inscription(s) IGI LG677582563
Comments: This Laboratory Grown Diamond was created by Chemical Vapor Deposition (CVD) growth process.