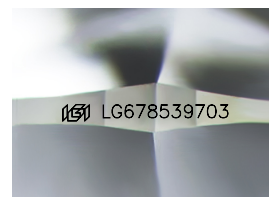
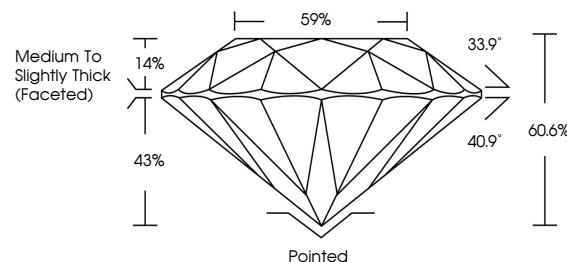


**ELECTRONIC COPY**

## LABORATORY GROWN DIAMOND REPORT

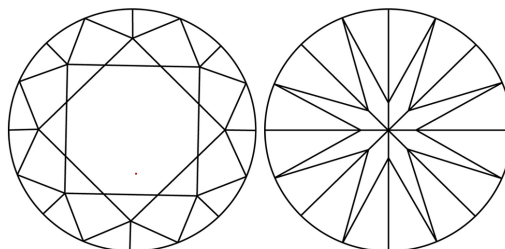
LG678539703  
Report verification at [lgi.org](https://lgi.org)

## PROPORTIONS



Sample Image Used

## CLARITY CHARACTERISTICS



## KEY TO SYMBOLS

Red symbols indicate internal characteristics.  
Green symbols indicate external characteristics.

## COLOR

D E F G H I J Faint Very Light Light

## CLARITY

IF WS<sup>1-2</sup> VS<sup>1-2</sup> SI<sup>1-2</sup> |<sup>1-3</sup>

Internally Flawless	Very Very Slightly Included	Very Slightly Included	Slightly Included	Included
------------------------	--------------------------------	---------------------------	----------------------	----------



© IGI 2020, International Gemological Institute

FD - 10 20

**www.igi.org**

## LABORATORY GROWN DIAMOND REPORT



January 27, 2025

IGI Report Number **LG678539703**Description **LABORATORY GROWN DIAMOND**Shape and Cutting Style **ROUND BRILLIANT**

Measurements 6.63 - 6.71 X 4.03 MM

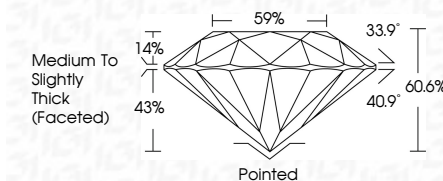
## GRADING RESULTS

Carat Weight 1.09 CARAT

Color Grade E

Clarity Grade WS 1

Cut Grade **IDEAL**



### ADDITIONAL GRADING INFORMATION

Polish **EXCELLENT**Symmetry **EXCELLENT**Fluorescence **NONE**Inscription(s)  LG678539703

Comments: As Grown - No indication of post-growth treatment.

This Laboratory Grown Diamond was created by High Pressure High Temperature (HPHT) growth process.

Type II



January 27, 2025	
GI Report No L657839703	
ROUND BRILLIANT	
Weight: 4.68 - 4.71 X 4.03 MM	
Color Weight	1.09 CARAT
Color Grade	E
Clarity Grade	VVS 1
Clarity Grade	IDEAL
Depth	50.5%
Table	59%
Grade	Medium to slightly Thick Faceted
Culet	Pointed
Polish	EXCELLENT
Symmetry	EXCELLENT
Fluorescence	NONE
Inscription(s)	L657839703
Comments:	
As Grown - No indication of post-growth treatment	
This Laboratory Grown Diamond was created by High Pressure High Temperature (HPHT) growth process.	