



# INTERNATIONAL GEMOLOGICAL INSTITUTE

ELECTRONIC COPY

LG678550980



February 10, 2025

IGI Report Number LG678550980

PEAR BRILLIANT

LABORATORY GROWN DIAMOND

6.71 X 4.04 X 2.36 MM

Carat Weight 0.39 CARAT

Color Grade F

Clarity Grade VS 1

Polish EXCELLENT

Symmetry VERY GOOD

Fluorescence NONE

Inscription(s) IGI LG678550980

Comments: This Laboratory Grown Diamond was created by Chemical Vapor Deposition (CVD) growth process. Type IIa

## LABORATORY GROWN DIAMOND REPORT

February 10, 2025

IGI Report Number

LG678550980

Description

LABORATORY GROWN DIAMOND

Shape and Cutting Style

PEAR BRILLIANT

Measurements

6.71 X 4.04 X 2.36 MM

### GRADING RESULTS

Carat Weight

0.39 CARAT

Color Grade

F

Clarity Grade

VS 1

### ADDITIONAL GRADING INFORMATION

Polish

EXCELLENT

Symmetry

VERY GOOD

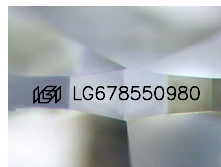
Fluorescence

NONE

Inscription(s)

IGI LG678550980

Comments: This Laboratory Grown Diamond was created by Chemical Vapor Deposition (CVD) growth process. Type IIa



Sample Image Used



February 10, 2025

IGI Report Number LG678550980

PEAR BRILLIANT

LABORATORY GROWN DIAMOND

6.71 X 4.04 X 2.36 MM

Carat Weight 0.39 CARAT

Color Grade F

Clarity Grade VS 1

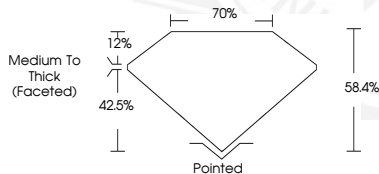
Polish EXCELLENT

Symmetry VERY GOOD

Fluorescence NONE

Inscription(s) IGI LG678550980

Comments: This Laboratory Grown Diamond was created by Chemical Vapor Deposition (CVD) growth process. Type IIa



THIS DOCUMENT WAS PRODUCED WITH THE FOLLOWING SECURITY MEASURES: SPECIAL DOCUMENT PAPER, INK SCREENS, WATERMARK, BACKGROUND DESIGNS, HOLOGRAM AND OTHER SECURITY FEATURES NOT LISTED AND DO EXCEED DOCUMENT SECURITY INDUSTRY GUIDELINES.

For terms & conditions and to verify this report, please visit [www.igi.org](http://www.igi.org)