



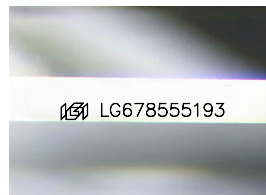
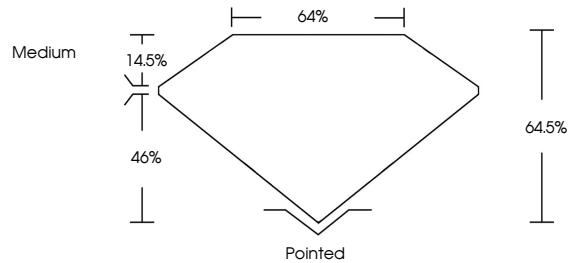
**INTERNATIONAL  
GEMOLOGICAL  
INSTITUTE**

**ELECTRONIC COPY**

## LABORATORY GROWN DIAMOND REPORT

LG678555193  
Report verification at [igi.org](https://www.igi.org)

## PROPORTIONS



Sample Image Used

**COLOR**

D E F G H I J Faint Very Light Light

## CLARITY

IF      WS<sup>1-2</sup>      VS<sup>1-2</sup>      SI<sup>1-2</sup>      I<sup>1-3</sup>

Internally Flawless	Very Very Slightly Included	Very Slightly Included	Slightly Included	Included
------------------------	--------------------------------	---------------------------	----------------------	----------

## LABORATORY GROWN DIAMOND REPORT



January 28, 2025

IGI Report Number **LG678555193**

Description	LABORATORY GROWN DIAMOND
-------------	--------------------------

Shape and Cutting Style

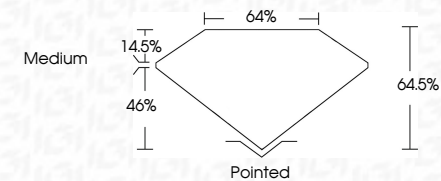
Measurements 8.08 X 5.92 X 3.82 MM

## GRADING RESULTS

Carat Weight **1.57 CARAT**

Color Grade E

Clarity Grade SI 1



### ADDITIONAL GRADING INFORMATION

Polish **EXCELLENT**Symmetry **EXCELLENT**

Fluorescence NONI

Inscription(s)  LG678555193

Comments: This Laboratory Grown Diamond was created by Chemical Vapor Deposition (CVD) growth process.  
Type IIa



IG

January 28, 2025	IGI Report No. IGI678655193
CUT CORNERED RECT. MODIFIED BRILLIANT	
6.09 X 5.92 X 3.82 MM	1.57 CARAT
Carat Weight	E
Color Grade	S1
Clarity Grade	64.5%
Depth	66%
Table	Medium
Girdle	
Culet	Painted
Polish	EXCELLENT
Symmetry	EXCELLENT
Fluorescence	NONE
Inscription(s)	IGI IGI678655193
Comments: This Laboratory Grown Diamond was created by Chemical Vapor Deposition (CVD) growth process. Type IId	

**Comments:**  
This Laboratory Grown Diamond was created by Chemical Vapor Deposition (CVD) growth process.

**www.igi.org**

© IGI 2020, International Gemological Institute

FD - 10 20



THIS DOCUMENT WAS PRODUCED WITH THE FOLLOWING SECURITY MEASURES: SPECIAL DOCUMENT PAPER, INK SCREENS, WATERMARK BACKGROUND DESIGNS, HOLOGRAM AND OTHER SECURITY FEATURES NOT LISTED AND DO EXCEED DOCUMENT SECURITY INDUSTRY GUIDELINES