



**ELECTRONIC COPY**

LG678596909  
Report verification at igi.org



February 4, 2025

IGI Report Number **LG678596909**

Description **LABORATORY GROWN DIAMOND**

Shape and Cutting Style **CUT CORNERED  
RECTANGULAR MODIFIED  
BRILLIANT**

Measurements **10.95 X 7.50 X 5.19 MM**

**GRADING RESULTS**

Carat Weight **4.04 CARATS**

Color Grade **FANCY INTENSE YELLOW**

Clarity Grade **VVS 2**

**LABORATORY GROWN DIAMOND REPORT**

February 4, 2025

IGI Report Number **LG678596909**

Description **LABORATORY GROWN DIAMOND**

Shape and Cutting Style **CUT CORNERED RECTANGULAR  
MODIFIED BRILLIANT**

Measurements **10.95 X 7.50 X 5.19 MM**

**GRADING RESULTS**

Carat Weight **4.04 CARATS**

Color Grade **FANCY INTENSE YELLOW**

Clarity Grade **VVS 2**

**ADDITIONAL GRADING INFORMATION**

Polish **EXCELLENT**

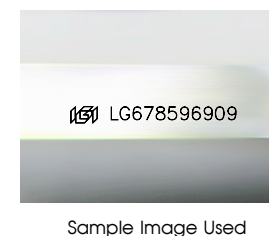
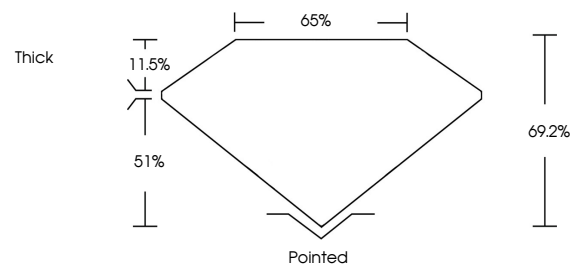
Symmetry **EXCELLENT**

Fluorescence **NONE**

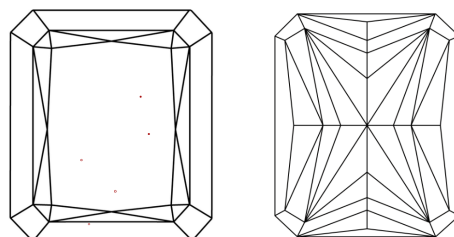
Inscription(s) **IGI LG678596909**

Comments: This Laboratory Grown Diamond was created by Chemical Vapor Deposition (CVD) growth process.

**PROPORTIONS**



**CLARITY CHARACTERISTICS**



**KEY TO SYMBOLS**

Red symbols indicate internal characteristics.  
Green symbols indicate external characteristics.

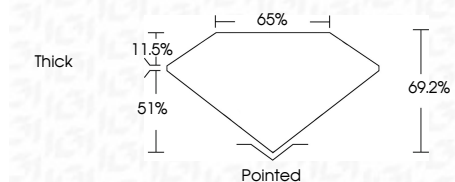
**COLOR**

D E F G H I J Faint Very Light Light

**CLARITY**

IF VS<sup>1-2</sup> VS<sup>1-2</sup> SI<sup>1-2</sup> I<sup>1-3</sup>

Internally Flawless Very Very Slightly Included Very Slightly Included Slightly Included Included



**ADDITIONAL GRADING INFORMATION**

Polish **EXCELLENT**

Symmetry **EXCELLENT**

Fluorescence **NONE**

Inscription(s) **IGI LG678596909**

Comments: This Laboratory Grown Diamond was created by Chemical Vapor Deposition (CVD) growth process.



**IGI**



February 4, 2025  
IGI Report No. LG678596909  
CUT CORNERED RECT. MODIFIED BRILLIANT

4.04 CARATS  
Carat Weight  
FANCY INTENSE YELLOW  
Color Grade

VVS 2  
Clarity Grade

69.2%  
Depth

65%  
Table

Thick  
Girdle

Pointed  
Culet

EXCELLENT  
Polish

EXCELLENT  
Symmetry

NONE  
Fluorescence

IGI LG678596909  
Inscription(s)

Comments: This Laboratory Grown Diamond was created by Chemical Vapor Deposition (CVD) growth process.