



ELECTRONIC COPY

LG678598344
Report verification at igi.org



January 28, 2025

IGI Report Number **LG678598344**

Description **LABORATORY GROWN DIAMOND**

Shape and Cutting Style **ROUND BRILLIANT**

Measurements **8.56 - 8.62 X 5.33 MM**

GRADING RESULTS

Carat Weight **2.43 CARATS**

Color Grade **D**

Clarity Grade **VVS 2**

Cut Grade **IDEAL**

January 28, 2025
IGI Report Number **LG678598344**
Description **LABORATORY GROWN DIAMOND**
Shape and Cutting Style **ROUND BRILLIANT**
Measurements **8.56 - 8.62 X 5.33 MM**

GRADING RESULTS

Carat Weight **2.43 CARATS**

Color Grade **D**

Clarity Grade **VVS 2**

Cut Grade **IDEAL**

ADDITIONAL GRADING INFORMATION

Polish **EXCELLENT**

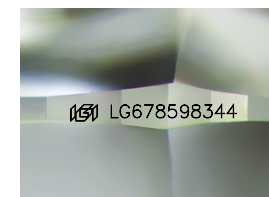
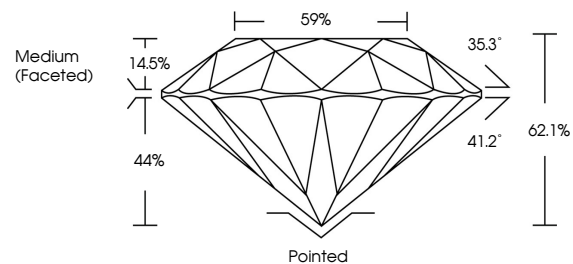
Symmetry **EXCELLENT**

Fluorescence **NONE**

Inscription(s) **LG678598344**

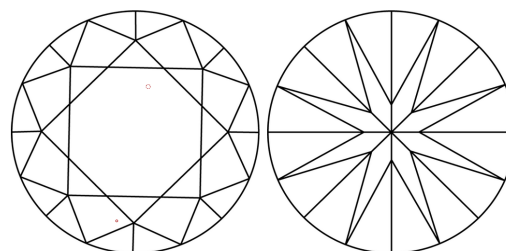
Comments: This Laboratory Grown Diamond was created by Chemical Vapor Deposition (CVD) growth process.
Type IIa

PROPORTIONS



Sample Image Used

CLARITY CHARACTERISTICS



KEY TO SYMBOLS

Red symbols indicate internal characteristics.
Green symbols indicate external characteristics.

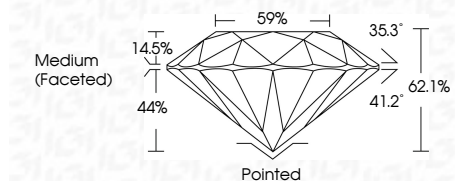
COLOR

D E F G H I J Faint Very Light Light

CLARITY

IF WS¹⁻² VS¹⁻² SI¹⁻² I¹⁻³

Internally Flawless Very Very Slightly Included Very Slightly Included Slightly Included Included



ADDITIONAL GRADING INFORMATION

Polish **EXCELLENT**

Symmetry **EXCELLENT**

Fluorescence **NONE**

Inscription(s) **LG678598344**

Comments: This Laboratory Grown Diamond was created by Chemical Vapor Deposition (CVD) growth process.
Type IIa



IGI



January 28, 2025	IGI Report No LG678598344	2.43 CARATS	D	Pointed	EXCELLENT	EXCELLENT	NONE	LG678598344
ROUND BRILLIANT	8.56 - 8.62 X 5.33 MM	Carat Weight	VVS 2	Medium (Faceted)	IDEAL	EXCELLENT	NONE	
		Color Grade	IDEAL		62.1%			
		Clarity Grade	62.1%					
		Cut Grade						
		Depth						
		Table						
		Girdle						
		Polish						
		Symmetry						
		Fluorescence						
		Inscription(s)						
		Comments: This Laboratory Grown Diamond was created by Chemical Vapor Deposition (CVD) growth process.						
		Type IIa						