



ELECTRONIC COPY

LABORATORY GROWN DIAMOND REPORT

February 3, 2025
IGI Report Number LG679516816
Description LABORATORY GROWN DIAMOND
Shape and Cutting Style CUSHION BRILLIANT
Measurements 10.23 X 7.98 X 5.56 MM

GRADING RESULTS

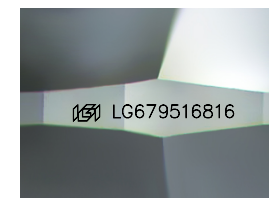
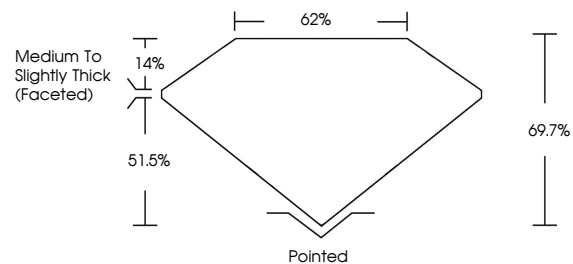
Carat Weight 3.56 CARATS
Color Grade E
Clarity Grade VVS 2

ADDITIONAL GRADING INFORMATION

Polish EXCELLENT
Symmetry EXCELLENT
Fluorescence NONE
Inscription(s) IGI LG679516816

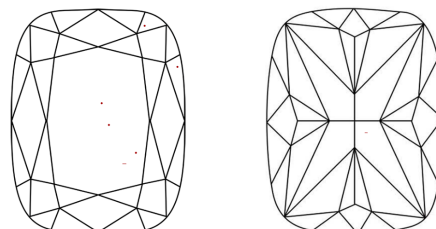
Comments: This Laboratory Grown Diamond was created by Chemical Vapor Deposition (CVD) growth process. Type IIa

PROPORTIONS



Sample Image Used

CLARITY CHARACTERISTICS



KEY TO SYMBOLS

Red symbols indicate internal characteristics.
Green symbols indicate external characteristics.

COLOR

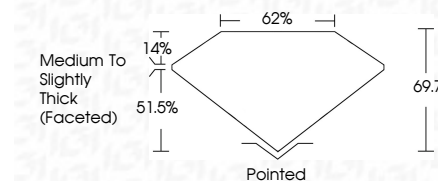
D E F G H I J Faint Very Light Light

CLARITY

IF WS¹⁻² VS¹⁻² SI¹⁻² I¹⁻³
Internally Flawless Very Very Slightly Included Very Slightly Included Slightly Included Included



February 3, 2025
IGI Report Number LG679516816
Description LABORATORY GROWN DIAMOND
Shape and Cutting Style CUSHION BRILLIANT
Measurements 10.23 X 7.98 X 5.56 MM
GRADING RESULTS
Carat Weight 3.56 CARATS
Color Grade E
Clarity Grade VVS 2



ADDITIONAL GRADING INFORMATION

Polish EXCELLENT
Symmetry EXCELLENT
Fluorescence NONE
Inscription(s) IGI LG679516816
Comments: This Laboratory Grown Diamond was created by Chemical Vapor Deposition (CVD) growth process. Type IIa



February 3, 2025
IGI Report No LG679516816
CUSHION BRILLIANT
10.23 X 7.98 X 5.56 MM
3.56 CARATS
E
VVS 2
69.7%
62%
Medium to Slightly Thick (Faceted)
Pointed
EXCELLENT
EXCELLENT
NONE
IGI LG679516816
Comments: This Laboratory Grown Diamond was created by Chemical Vapor Deposition (CVD) growth process. Type IIa