

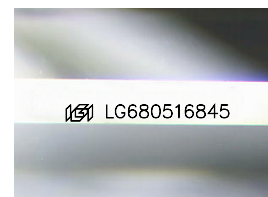
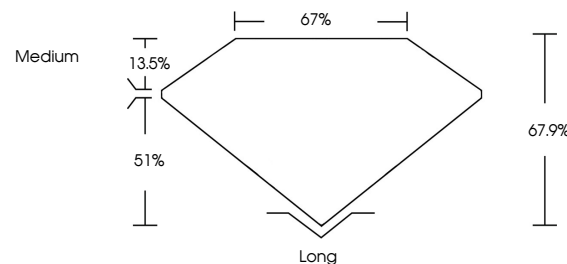


**ELECTRONIC COPY**

## LABORATORY GROWN DIAMOND REPORT

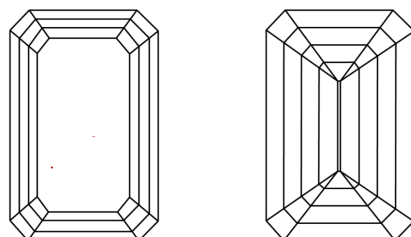
LG680516845  
Report verification at [igi.org](https://igi.org)

## PROPORTIONS



Sample Image Used

## CLARITY CHARACTERISTICS



### KEY TO SYMBOLS

Red symbols indicate internal characteristics.  
Green symbols indicate external characteristics.

## COLOR

D E F G H I J Faint Very Light Light

## CLARITY

IF      VWS<sup>1-2</sup>      VS<sup>1-2</sup>      SI<sup>1-2</sup>      I<sup>1-3</sup>

Internally Flawless	Very Very Slightly Included	Very Slightly Included	Slightly Included	Included
------------------------	--------------------------------	---------------------------	----------------------	----------

## LABORATORY GROWN DIAMOND REPORT



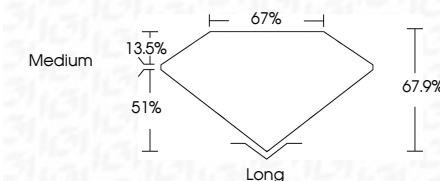
January 29, 2025

IGI Report Number **LG680516845**Description **LABORATORY GROWN DIAMOND**Shape and Cutting Style **EMERALD CUT**

Measurements **9.75 X 6.79 X 4.61 MM**

## GRADING RESULTS

Carat Weight **3.03 CARATS**

Color Grade GClarity Grade **VVS 2**

### ADDITIONAL GRADING INFORMATION

Polish **EXCELLENT**Symmetry **EXCELLENT**Fluorescence **NONE**Inscription(s)  LG680516845

Comments: This Laboratory Grown Diamond was created by Chemical Vapor Deposition (CVD) growth process.  
Type IIa



**www.igi.org**

© IGI 2020, International Gemological Institute

FD - 10 20



THIS DOCUMENT WAS PRODUCED WITH THE FOLLOWING SECURITY MEASURES: SPECIAL DOCUMENT PAPER, INK SCREENS, WATERMARK, BACKGROUND DESIGNS, HOLOGRAM AND OTHER SECURITY FEATURES NOT LISTED AND DO EXCEED DOCUMENT SECURITY INDUSTRY GUIDELINES

January 29, 2025  
 IGI Report No LG680516845  
 EVERALD CITE

7.75 X 6.75 X 4.61 MM	3.03 CARATS	VVS 2	Long	EXCELLENT	EXCELLENT	None	Serial 1549011945
Carat Weight		67.9%					
Color Grade		67%					
Clarity Grade		Medium					
Depth							
Table							
Girdle							
Polish							
Symmetry							
Fluorescence							
Measurements (mm)							

**Comments:**  
This Laboratory Grown Diamond was  
created by Chemical Vapor Deposition  
(CVD) growth process.