



ELECTRONIC COPY

LG680532889
Report verification at igi.org



January 31, 2025

IGI Report Number **LG680532889**

Description **LABORATORY GROWN DIAMOND**

Shape and Cutting Style **PRINCESS CUT**

Measurements **10.78 X 10.53 X 7.41 MM**

GRADING RESULTS

Carat Weight **8.01 CARATS**

Color Grade **D**

Clarity Grade **VS 1**

January 31, 2025
IGI Report Number **LG680532889**
Description **LABORATORY GROWN DIAMOND**
Shape and Cutting Style **PRINCESS CUT**
Measurements **10.78 X 10.53 X 7.41 MM**

GRADING RESULTS

Carat Weight **8.01 CARATS**

Color Grade **D**

Clarity Grade **VS 1**

ADDITIONAL GRADING INFORMATION

Polish **EXCELLENT**

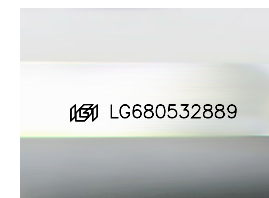
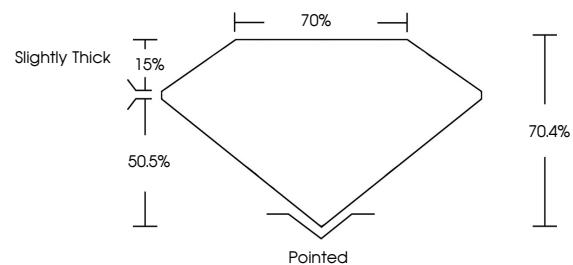
Symmetry **EXCELLENT**

Fluorescence **NONE**

Inscription(s) **LG680532889**

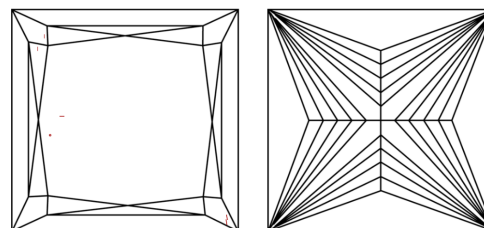
Comments: This Laboratory Grown Diamond was created by Chemical Vapor Deposition (CVD) growth process.
Type IIa

PROPORTIONS



Sample Image Used

CLARITY CHARACTERISTICS



KEY TO SYMBOLS

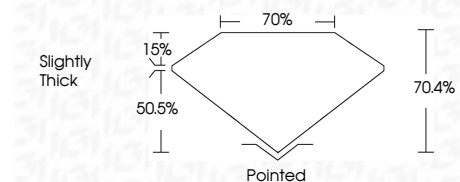
Red symbols indicate internal characteristics.
Green symbols indicate external characteristics.

COLOR

D E F G H I J Faint Very Light Light

CLARITY

| IF | VS ¹⁻² | VS ¹⁻² | SI ¹⁻² | I ¹⁻³ |
|---------------------|-----------------------------|------------------------|-------------------|------------------|
| Internally Flawless | Very Very Slightly Included | Very Slightly Included | Slightly Included | Included |



ADDITIONAL GRADING INFORMATION

Polish **EXCELLENT**

Symmetry **EXCELLENT**

Fluorescence **NONE**

Inscription(s) **LG680532889**

Comments: This Laboratory Grown Diamond was created by Chemical Vapor Deposition (CVD) growth process.
Type IIa



IGI



January 31, 2025
IGI Report No. LG680532889
PRINCESS CUT

8.01 CARATS
D

10.78 X 10.53 X 7.41 MM

Carat Weight
Color Grade
Clarity Grade
Table
Girdle
Slightly Thick

Pointed
EXCELLENT
EXCELLENT
NONE
None

IGI LG680532889

Comments: This Laboratory Grown Diamond was created by Chemical Vapor Deposition (CVD) growth process.
Type IIa