



INTERNATIONAL GEMOLOGICAL INSTITUTE

LABORATORY GROWN DIAMOND REPORT

February 1, 2025
IGI Report Number **LG680538459**
Description **LABORATORY GROWN DIAMOND**
Shape and Cutting Style **PRINCESS CUT**
Measurements **3.73 X 3.66 X 2.70 MM**

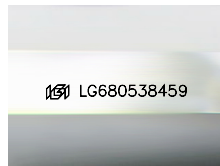
GRADING RESULTS

Carat Weight **0.33 CARAT**
Color Grade **G**
Clarity Grade **VVS 2**

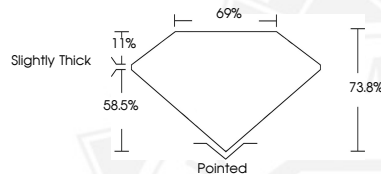
ADDITIONAL GRADING INFORMATION

Polish **EXCELLENT**
Symmetry **VERY GOOD**
Fluorescence **NONE**
Inscription(s) **IGI LG680538459**

Comments: As Grown - No indication of post-growth treatment. This Laboratory Grown Diamond was created by High Pressure High Temperature (HPHT) growth process. Type II



Sample Image Used



THIS DOCUMENT WAS PRODUCED WITH THE FOLLOWING SECURITY MEASURES: SPECIAL DOCUMENT PAPER, INK SCREENS, WATERMARK, BACKGROUND DESIGNS, HOLOGRAM AND OTHER SECURITY FEATURES NOT LISTED AND DO EXCEED DOCUMENT SECURITY INDUSTRY GUIDELINES.

For terms & conditions and to verify this report, please visit www.igi.org



February 1, 2025

IGI Report Number **LG680538459**
PRINCESS CUT
LABORATORY GROWN DIAMOND
3.73 X 3.66 X 2.70 MM
Carat Weight **0.33 CARAT**
Color Grade **G**
Clarity Grade **VVS 2**
Polish **EXCELLENT**
Symmetry **VERY GOOD**
Fluorescence **NONE**
Inscription(s) **IGI LG680538459**

Comments: As Grown - No indication of post-growth treatment. This Laboratory Grown Diamond was created by High Pressure High Temperature (HPHT) growth process. Type II



February 1, 2025

IGI Report Number **LG680538459**
PRINCESS CUT
LABORATORY GROWN DIAMOND
3.73 X 3.66 X 2.70 MM
Carat Weight **0.33 CARAT**
Color Grade **G**
Clarity Grade **VVS 2**
Polish **EXCELLENT**
Symmetry **VERY GOOD**
Fluorescence **NONE**
Inscription(s) **IGI LG680538459**

Comments: As Grown - No indication of post-growth treatment. This Laboratory Grown Diamond was created by High Pressure High Temperature (HPHT) growth process. Type II