



ELECTRONIC COPY

LG680546493
Report verification at igi.org



February 5, 2025
IGI Report Number **LG680546493**
Description **LABORATORY GROWN DIAMOND**
Shape and Cutting Style **CUT CORNERED
RECTANGULAR MODIFIED
BRILLIANT**
Measurements **15.74 X 11.25 X 7.20 MM**
GRADING RESULTS
Carat Weight **12.04 CARATS**
Color Grade **FANCY INTENSE PINK**
Clarity Grade **VS 2**

February 5, 2025
IGI Report Number **LG680546493**
Description **LABORATORY GROWN DIAMOND**
Shape and Cutting Style **CUT CORNERED RECTANGULAR
MODIFIED BRILLIANT**
Measurements **15.74 X 11.25 X 7.20 MM**

GRADING RESULTS

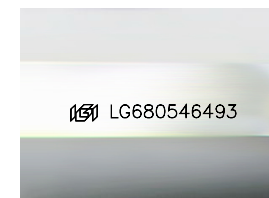
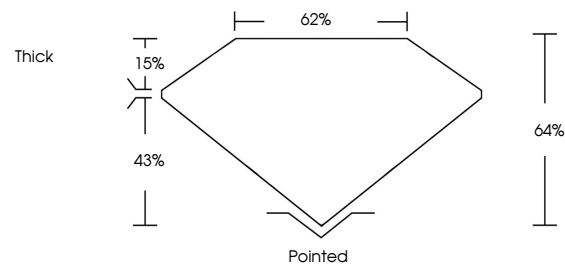
Carat Weight **12.04 CARATS**
Color Grade **FANCY INTENSE PINK**
Clarity Grade **VS 2**

ADDITIONAL GRADING INFORMATION

Polish **EXCELLENT**
Symmetry **EXCELLENT**
Fluorescence **STRONG**
Inscription(s) **IGI LG680546493**

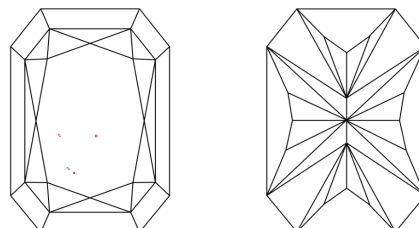
Comments: This Laboratory Grown Diamond was created by Chemical Vapor Deposition (CVD) growth process. Indications of post-growth treatment.

PROPORTIONS



Sample Image Used

CLARITY CHARACTERISTICS



KEY TO SYMBOLS

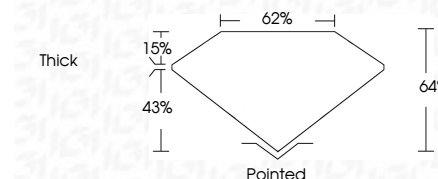
Red symbols indicate internal characteristics.
Green symbols indicate external characteristics.

COLOR

D E F G H I J Faint Very Light Light

CLARITY

IF	VS ¹⁻²	VS ¹⁻²	SI ¹⁻²	I ¹⁻³
Internally Flawless	Very Very Slightly Included	Very Slightly Included	Slightly Included	Included



ADDITIONAL GRADING INFORMATION

Polish **EXCELLENT**
Symmetry **EXCELLENT**
Fluorescence **STRONG**
Inscription(s) **IGI LG680546493**
Comments: This Laboratory Grown Diamond was created by Chemical Vapor Deposition (CVD) growth process. Indications of post-growth treatment.



February 5, 2025
IGI Report No. LG680546493
CUT CORNERED RECT. MODIFIED BRILLIANT
15.74 X 11.25 X 7.20 MM
12.04 CARATS
FANCY INTENSE PINK
VS 2
64%
62%
Thick
Pointed
EXCELLENT
EXCELLENT
STRONG
IGI LG680546493
Comments: This Laboratory Grown Diamond was created by Chemical Vapor Deposition (CVD) growth process. Indications of post-growth treatment.