



ELECTRONIC COPY

LG680589157
Report verification at igi.org



February 6, 2025

IGI Report Number **LG680589157**

Description **LABORATORY GROWN DIAMOND**

Shape and Cutting Style **CUT CORNERED
RECTANGULAR MODIFIED
BRILLIANT**

Measurements **12.83 X 9.26 X 6.07 MM**

GRADING RESULTS

Carat Weight **6.11 CARATS**

Color Grade **D**

Clarity Grade **VS 1**

February 6, 2025

IGI Report Number **LG680589157**

Description **LABORATORY GROWN DIAMOND**

Shape and Cutting Style **CUT CORNERED RECTANGULAR
MODIFIED BRILLIANT**

Measurements **12.83 X 9.26 X 6.07 MM**

GRADING RESULTS

Carat Weight **6.11 CARATS**

Color Grade **D**

Clarity Grade **VS 1**

ADDITIONAL GRADING INFORMATION

Polish **EXCELLENT**

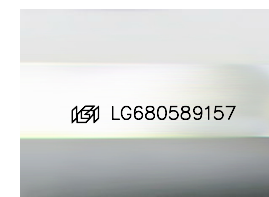
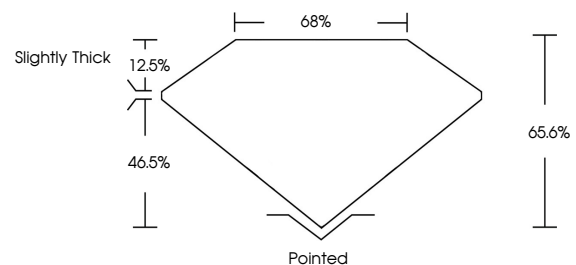
Symmetry **EXCELLENT**

Fluorescence **NONE**

Inscription(s) **IGI LG680589157**

Comments: This Laboratory Grown Diamond was created by Chemical Vapor Deposition (CVD) growth process.
Type IIa

PROPORTIONS



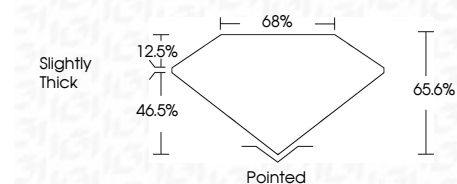
Sample Image Used

COLOR

D E F G H I J Faint Very Light Light

CLARITY

| IF | VS ¹⁻² | VS ¹⁻² | SI ¹⁻² | I ¹⁻³ |
|---------------------|-----------------------------|------------------------|-------------------|------------------|
| Internally Flawless | Very Very Slightly Included | Very Slightly Included | Slightly Included | Included |



ADDITIONAL GRADING INFORMATION

Polish **EXCELLENT**

Symmetry **EXCELLENT**

Fluorescence **NONE**

Inscription(s) **IGI LG680589157**

Comments: This Laboratory Grown Diamond was created by Chemical Vapor Deposition (CVD) growth process.
Type IIa



IGI



February 6, 2025
IGI Report No. LG680589157
CUT CORNERED RECT. MODIFIED BRILLIANT

12.83 X 9.26 X 6.07 MM

6.11 CARATS
D

VS 1
65.6%
65%

Slightly Thick

Pointed
EXCELLENT
EXCELLENT
NONE
IGI LG680589157

Comments: This Laboratory Grown Diamond was created by Chemical Vapor Deposition (CVD) growth process.
Type IIa