



**ELECTRONIC COPY**

LG680593277  
Report verification at igi.org



February 14, 2025

IGI Report Number **LG680593277**

Description **LABORATORY GROWN DIAMOND**

Shape and Cutting Style **CUT CORNERED  
RECTANGULAR MODIFIED  
BRILLIANT**

Measurements **7.38 X 5.26 X 3.48 MM**

**GRADING RESULTS**

Carat Weight **1.32 CARAT**

Color Grade **FANCY VIVID YELLOW**

Clarity Grade **VS 1**

**LABORATORY GROWN DIAMOND REPORT**

February 14, 2025

IGI Report Number **LG680593277**

Description **LABORATORY GROWN DIAMOND**

Shape and Cutting Style **CUT CORNERED RECTANGULAR  
MODIFIED BRILLIANT**

Measurements **7.38 X 5.26 X 3.48 MM**

**GRADING RESULTS**

Carat Weight **1.32 CARAT**

Color Grade **FANCY VIVID YELLOW**

Clarity Grade **VS 1**

**ADDITIONAL GRADING INFORMATION**

Polish **EXCELLENT**

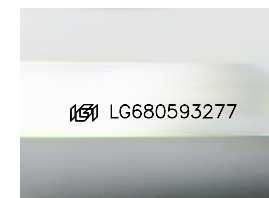
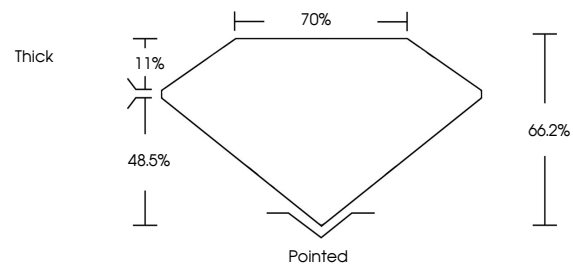
Symmetry **EXCELLENT**

Fluorescence **NONE**

Inscription(s) **IGI LG680593277**

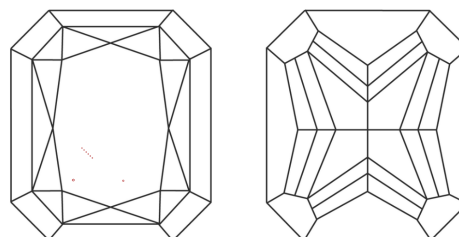
Comments: This Laboratory Grown Diamond was created by Chemical Vapor Deposition (CVD) growth process.

**PROPORTIONS**



Sample Image Used

**CLARITY CHARACTERISTICS**



**KEY TO SYMBOLS**

Red symbols indicate internal characteristics.  
Green symbols indicate external characteristics.

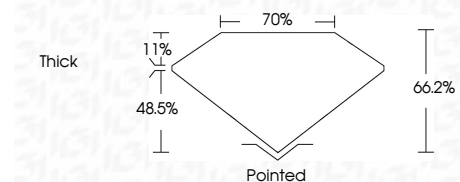
**COLOR**

D E F G H I J Faint Very Light Light

**CLARITY**

IF WS<sup>1-2</sup> VS<sup>1-2</sup> SI<sup>1-2</sup> I<sup>1-3</sup>

Internally Flawless Very Very Slightly Included Very Slightly Included Slightly Included Included



**ADDITIONAL GRADING INFORMATION**

Polish **EXCELLENT**

Symmetry **EXCELLENT**

Fluorescence **NONE**

Inscription(s) **IGI LG680593277**

Comments: This Laboratory Grown Diamond was created by Chemical Vapor Deposition (CVD) growth process.



**IGI**



February 14, 2025	IGI Report No LG680593277	CUT CORNERED RECT. MODIFIED BRILLIANT	7.38 X 5.26 X 3.48 MM	1.32 CARAT	FANCY VIVID YELLOW	VS 1	66.2%	70%	Thick	Pointed	EXCELLENT	EXCELLENT	NONE	IGI LG680593277
Polish	Symmetry	Fluorescence	Depth	Table	Girdle	Culet	Polish	Symmetry	Fluorescence	Inscription(s)				

Comments: This Laboratory Grown Diamond was created by Chemical Vapor Deposition (CVD) growth process.