

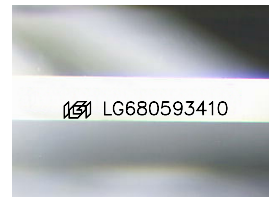
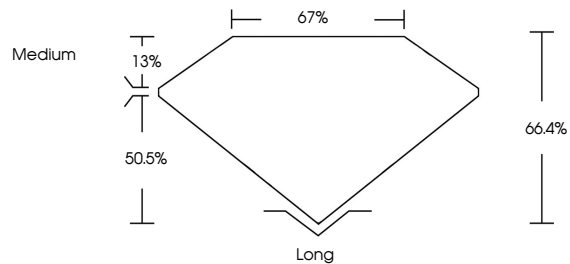


**INTERNATIONAL  
GEMOLOGICAL  
INSTITUTE**

**ELECTRONIC COPY**

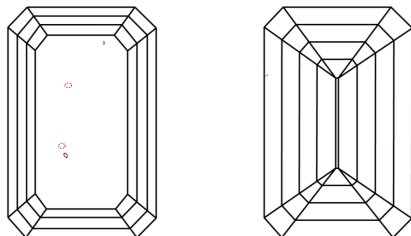
LG680593410  
Report verification at [igi.org](https://igi.org)

## PROPORTIONS



Sample Image Used

## CLARITY CHARACTERISTICS



## KEY TO SYMBOLS

Red symbols indicate internal characteristics.  
Green symbols indicate external characteristics.

**COLOR**

D E F G H I J Faint Very Light Light

## CLARITY

IF	WS <sup>1-2</sup>	VS <sup>1-2</sup>	SI <sup>1-2</sup>	I <sup>1-3</sup>
----	-------------------	-------------------	-------------------	------------------

Internally Flawless	Very Very Slightly Included	Very Slightly Included	Slightly Included	Included
------------------------	--------------------------------	---------------------------	----------------------	----------



February 7, 2025

IGI Report Number **LG680593410**

Description	LABORATORY GROWN DIAMOND
-------------	--------------------------

Shape and Cutting Style **EMERALD CUT**

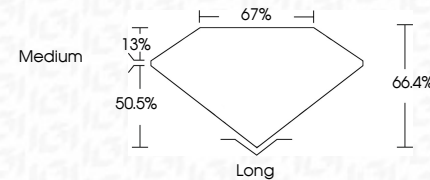
Measurements 10.75 X 7.56 X 5.02 MM

## GRADING RESULTS

Carat Weight **4.02 CARATS**

Color Grade	E
-------------	---

Clarity Grade	SI 1
---------------	------



### ADDITIONAL GRADING INFORMATION

Polish **EXCELLENT**Symmetry **EXCELLENT**Fluorescence **NONE**Inscription(s)  LG68059341

Comments: This Laboratory Grown Diamond was created by Chemical Vapor Deposition (CVD) growth process.  
Type IIa



IG

February 7, 2025  
IGI Report No LG680593410  
EMERALD CUT

10.75 X 7.55 X 5.02 MM	4.02 CARATS
Carat Weight	E
Color Grade	S1
Clarity Grade	66.4%
Depth	67%
Table	Medium
Girdle	Long
Culet	EXCELLENT
Polish	EXCELLENT
Symmetry	NONE
Fluorescence	4mm x 6mm x 4mm
Measurements (mm)	

**Comments:**  
This Laboratory Grown Diamond was created by Chemical Vapor Deposition (CVD) growth process.  
Type IIa

© IGI 2020, International Gemological Institute

FD - 10 20



THIS DOCUMENT WAS PRODUCED WITH THE FOLLOWING SECURITY MEASURES: SPECIAL DOCUMENT PAPER, INK SCREENS, WATERMARK BACKGROUND DESIGNS, HOLOGRAM, AND OTHER SECURITY FEATURES NOT LISTED AND DO EXCEED DOCUMENT SECURITY INDUSTRY GUIDELINES

**www.igi.org**