



ELECTRONIC COPY

LABORATORY GROWN DIAMOND REPORT

LG681504420
Report verification at igi.org

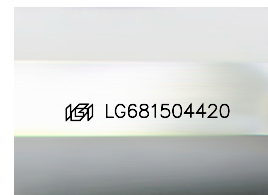
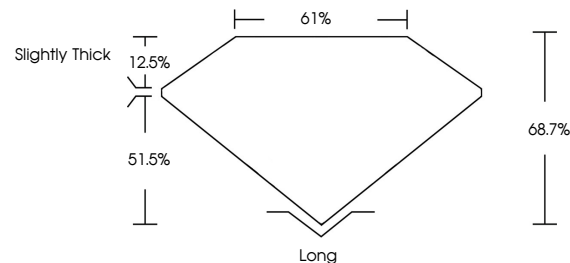
April 24, 2025	
IGI Report Number	LG681504420
Description	LABORATORY GROWN DIAMOND
Shape and Cutting Style	EMERALD CUT
Measurements	9.14 X 6.01 X 4.13 MM
GRADING RESULTS	
Carat Weight	2.18 CARATS
Color Grade	E
Clarity Grade	VVS 2

ADDITIONAL GRADING INFORMATION

Polish	EXCELLENT
Symmetry	EXCELLENT
Fluorescence	NONE
Inscription(s)	151 LG681504420

Comments: This Laboratory Grown Diamond was created by Chemical Vapor Deposition (CVD) growth process.
Type IIa

PROPORTIONS



Sample Image Used

COLOR

D E F G H I J Faint Very Light Light

CLARITY

IF	VS ¹⁻²	VS ¹⁻²	SI ¹⁻²	I ¹⁻³
Internally Flawless	Very Very Slightly Included	Very Slightly Included	Slightly Included	Included

LABORATORY GROWN DIAMOND REPORT



April 24, 2025	
IGI Report Number	LG681504420
Description	LABORATORY GROWN DIAMOND
Shape and Cutting Style	EMERALD CUT
Measurements	9.14 X 6.01 X 4.13 MM
GRADING RESULTS	
Carat Weight	2.18 CARATS
Color Grade	E
Clarity Grade	VVS 2

ADDITIONAL GRADING INFORMATION

Polish	EXCELLENT
Symmetry	EXCELLENT
Fluorescence	NONE
Inscription(s)	 LG681504420
<p>Comments: This Laboratory Grown Diamond was created by Chemical Vapor Deposition (CVD) growth process.</p> <p>Type IIa</p>	



© IGI 2020, International Gemological Institute

FD - 10 20

www.igi.org

THIS DOCUMENT WAS PRODUCED WITH THE FOLLOWING SECURITY MEASURES: SPECIAL DOCUMENT PAPER, INK SCREENS, WATERMARK BACKGROUND DESIGNS, HOLOGRAM AND OTHER SECURITY FEATURES NOT LISTED AND DO EXCEED DOCUMENT SECURITY INDUSTRY GUIDELINES

April 24, 2025
GI Report No LG681504420

2.14 X 6.01 X 4.13 MM	2.18 CARATS
Carat Weight	VVS 2
Color Grade	68.7%
Clarity Grade	61%
Cut Grade	Slightly Thick
Color	Long
Fluorescence	EXCELLENT
	EXCELLENT
	NONE

Comments:
This Laboratory Grown Diamond was
created by Chemical Vapor Deposition
(CVD) growth process.