



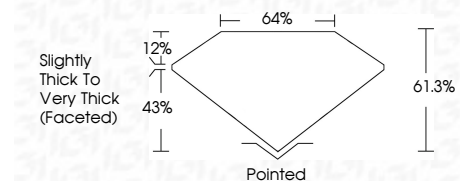
**ELECTRONIC COPY**

LG681512194  
Report verification at igi.org



February 5, 2025  
IGI Report Number **LG681512194**  
Description **LABORATORY GROWN DIAMOND**  
Shape and Cutting Style **OVAL BRILLIANT**  
Measurements **10.64 X 7.18 X 4.40 MM**

**GRADING RESULTS**  
Carat Weight **2.30 CARATS**  
Color Grade **D**  
Clarity Grade **VS 2**



**ADDITIONAL GRADING INFORMATION**  
Polish **EXCELLENT**  
Symmetry **VERY GOOD**  
Fluorescence **NONE**  
Inscription(s) **IGI LG681512194**  
Comments: This Laboratory Grown Diamond was created by Chemical Vapor Deposition (CVD) growth process. Type IIa



February 5, 2025  
IGI Report No LG681512194  
**OVAL BRILLIANT**  
10.64 X 7.18 X 4.40 MM  
2.30 CARATS  
D  
61.3%  
43%  
12%  
Slightly Thick To Very Thick (Faceted)  
Pointed  
EXCELLENT  
VERY GOOD  
NONE  
IGI LG681512194  
Comments: This Laboratory Grown Diamond was created by Chemical Vapor Deposition (CVD) growth process. Type IIa

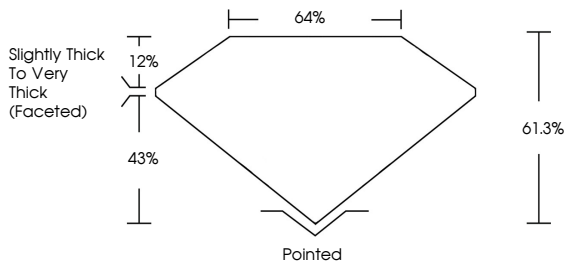
February 5, 2025  
IGI Report Number **LG681512194**  
Description **LABORATORY GROWN DIAMOND**  
Shape and Cutting Style **OVAL BRILLIANT**  
Measurements **10.64 X 7.18 X 4.40 MM**

**GRADING RESULTS**  
Carat Weight **2.30 CARATS**  
Color Grade **D**  
Clarity Grade **VS 2**

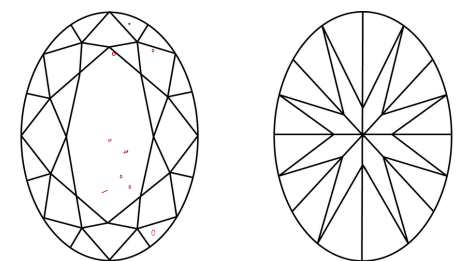
**ADDITIONAL GRADING INFORMATION**  
Polish **EXCELLENT**  
Symmetry **VERY GOOD**  
Fluorescence **NONE**  
Inscription(s) **IGI LG681512194**

Comments: This Laboratory Grown Diamond was created by Chemical Vapor Deposition (CVD) growth process. Type IIa

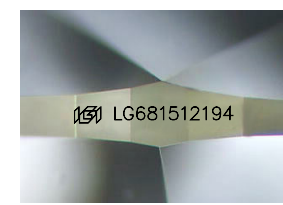
**PROPORTIONS**



**CLARITY CHARACTERISTICS**



**KEY TO SYMBOLS**  
Red symbols indicate internal characteristics.  
Green symbols indicate external characteristics.



Sample Image Used

**COLOR**

D	E	F	G	H	I	J	Faint	Very Light	Light
---	---	---	---	---	---	---	-------	------------	-------

**CLARITY**

IF	VS <sup>1-2</sup>	VS <sup>1-2</sup>	SI <sup>1-2</sup>	I <sup>1-3</sup>
Internally Flawless	Very Very Slightly Included	Very Slightly Included	Slightly Included	Included

