



ELECTRONIC COPY

LG681517309
Report verification at igi.org



February 7, 2025

IGI Report Number **LG681517309**

Description **LABORATORY GROWN DIAMOND**

Shape and Cutting Style **PRINCESS CUT**

Measurements **7.94 X 7.64 X 5.24 MM**

GRADING RESULTS

Carat Weight **2.83 CARATS**

Color Grade **F**

Clarity Grade **VVS 2**

February 7, 2025
IGI Report Number **LG681517309**
Description **LABORATORY GROWN DIAMOND**
Shape and Cutting Style **PRINCESS CUT**
Measurements **7.94 X 7.64 X 5.24 MM**

GRADING RESULTS

Carat Weight **2.83 CARATS**

Color Grade **F**

Clarity Grade **VVS 2**

ADDITIONAL GRADING INFORMATION

Polish **EXCELLENT**

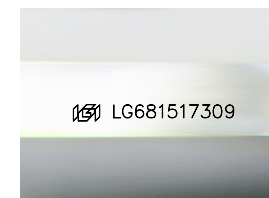
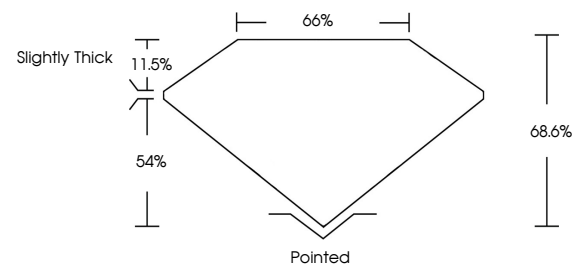
Symmetry **EXCELLENT**

Fluorescence **NONE**

Inscription(s) **IGI LG681517309**

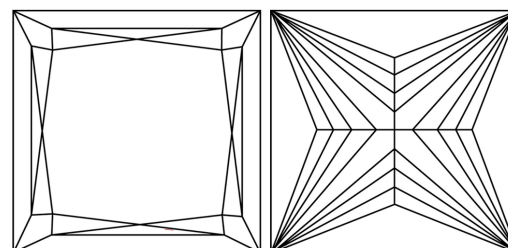
Comments: This Laboratory Grown Diamond was created by Chemical Vapor Deposition (CVD) growth process. Type IIa

PROPORTIONS



Sample Image Used

CLARITY CHARACTERISTICS



KEY TO SYMBOLS

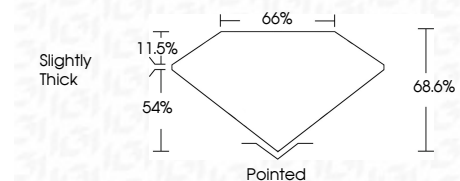
Red symbols indicate internal characteristics.
Green symbols indicate external characteristics.

COLOR

D E F G H I J Faint Very Light Light

CLARITY

IF	VS ¹⁻²	VS ¹⁻²	SI ¹⁻²	I ¹⁻³
Internally Flawless	Very Very Slightly Included	Very Slightly Included	Slightly Included	Included



ADDITIONAL GRADING INFORMATION

Polish **EXCELLENT**

Symmetry **EXCELLENT**

Fluorescence **NONE**

Inscription(s) **IGI LG681517309**

Comments: This Laboratory Grown Diamond was created by Chemical Vapor Deposition (CVD) growth process. Type IIa



IGI



February 7, 2025
IGI Report No. LG681517309
PRINCESS CUT

2.83 CARATS
F

7.94 X 7.64 X 5.24 MM
VVS 2
68.6%
54%
11.5%

Slightly Thick
Pointed
EXCELLENT
EXCELLENT
NONE
IGI LG681517309

Culet
Polish
Symmetry
Fluorescence
Inscription(s)

Comments: This Laboratory Grown Diamond was created by Chemical Vapor Deposition (CVD) growth process. Type IIa